

Jasper County, Iowa
Iowa South Zone (1402)
Horiz. Datum: NAD83(1996)
Vert. Datum: NAVD 1988
US Survey Feet
2005

Point Name: **R07**

Designation: Jasper County GPS Monument R07-2005

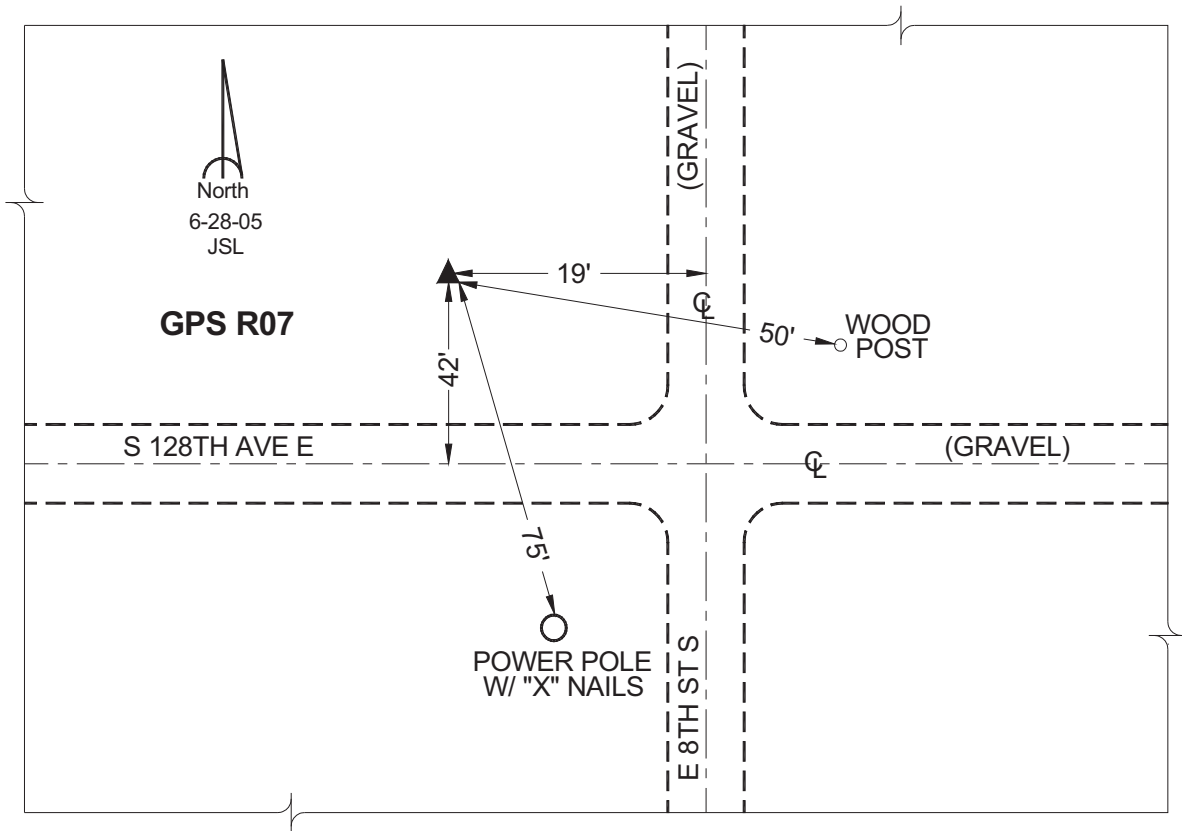
Northing: **549935.90sft** Easting: **1765210.84sft**

Orthometric Height: **894.30sft** Ellipsoid Height: **789.27sft** **Geoid03**

Latitude: **41°30'30.67459"** Longitude: **93°02'39.70789"**

Mapping Angle: **0°18'00"** Combination Scale Factor: **0.99992509**

Monument Type: Cast in-place concrete monument with aluminum disk.



This document was prepared by GBC and DCI for use by Jasper County, Iowa.