

**Jasper County, Iowa**  
Iowa South Zone (1402)  
Horiz. Datum: NAD83(1996)  
Vert. Datum: NAVD 1988  
US Survey Feet  
**2005**

Point Name: **R08**

**Designation:** Jasper County GPS Monument R08-2005

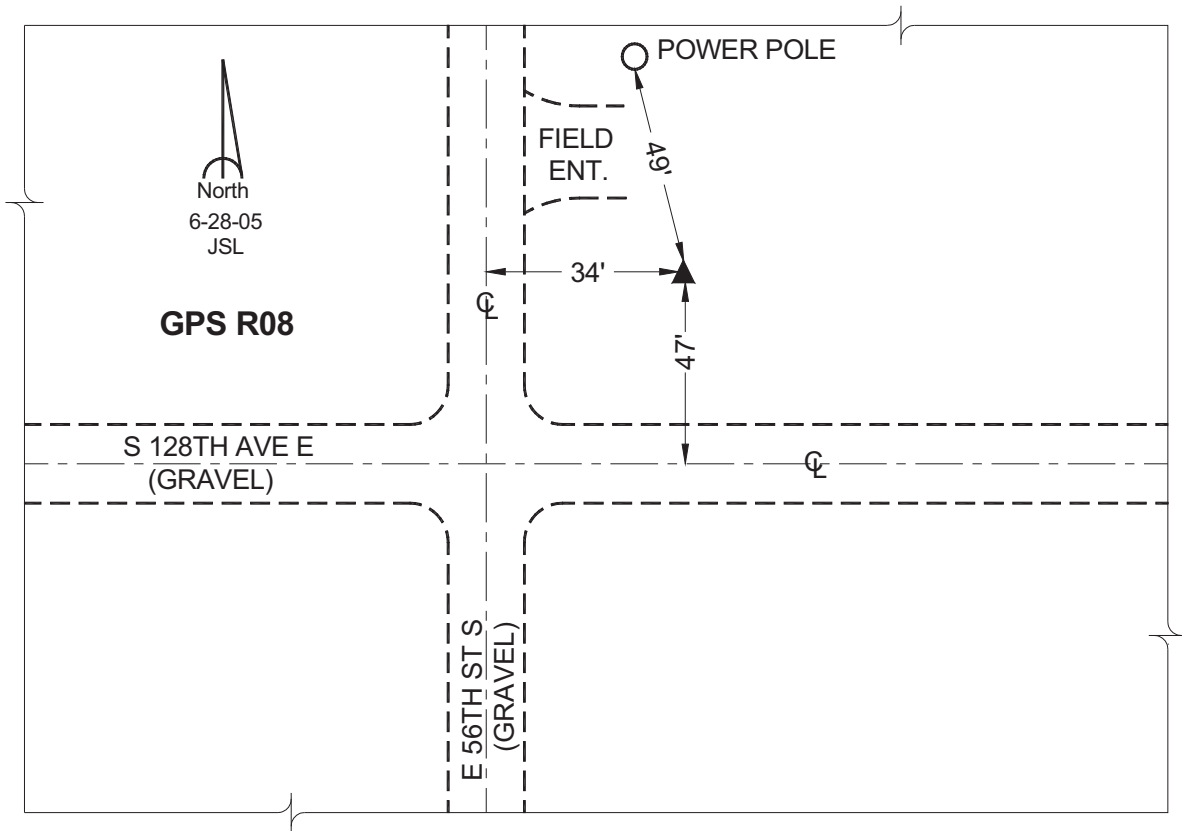
Northing: **549980.55sft**    Easting: **1781143.71sft**

Orthometric Height: **744.25sft**    Ellipsoid Height: **639.08sft**    **Geoid03**

Latitude: **41°30'30.23853"**    Longitude: **92°59'10.28767"**

Mapping Angle: **0°20'18"**    Combination Scale Factor: **0.99993225**

**Monument Type:** Cast in-place concrete monument with aluminum disk.



*This document was prepared by GBC and DCI for use by Jasper County, Iowa.*