

Jasper County, Iowa
Iowa South Zone (1402)
Horiz. Datum: NAD83(1996)
Vert. Datum: NAVD 1988
US Survey Feet
2005

Point Name: **S01**

Designation: Jasper County GPS Monument S01-2005

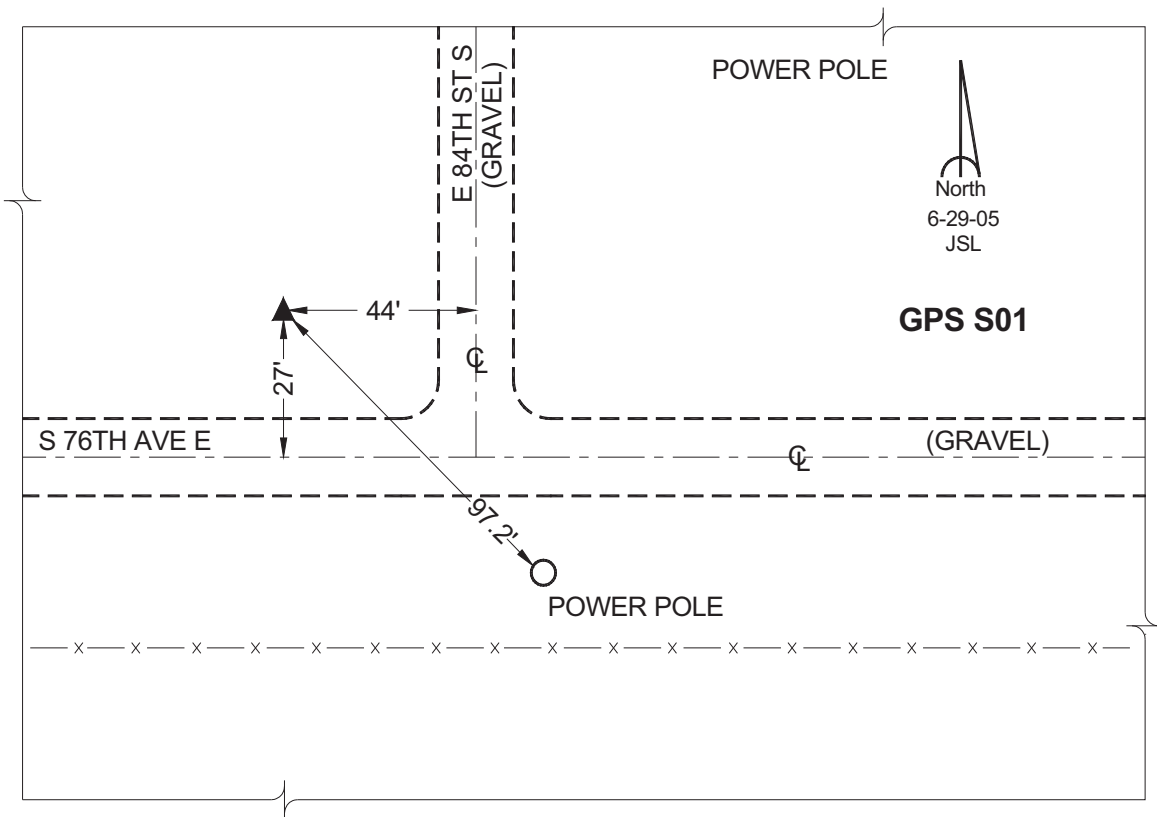
Northing: **584049.55sft** Easting: **1793154.54sft**

Orthometric Height: **877.07sft** Ellipsoid Height: **772.19sft** **Geoid03**

Latitude: **41°36'06.10221"** Longitude: **92°56'29.54693"**

Mapping Angle: **0°22'04"** Combination Scale Factor: **0.99993595**

Monument Type: Cast in-place concrete monument with aluminum disk.



This document was prepared by GBC and DCI for use by Jasper County, Iowa.