

Jasper County, Iowa
Iowa South Zone (1402)
Horiz. Datum: NAD83(1996)
Vert. Datum: NAVD 1988
US Survey Feet
2005

Point Name: **S02**

Designation: Jasper County GPS Monument S02-2005

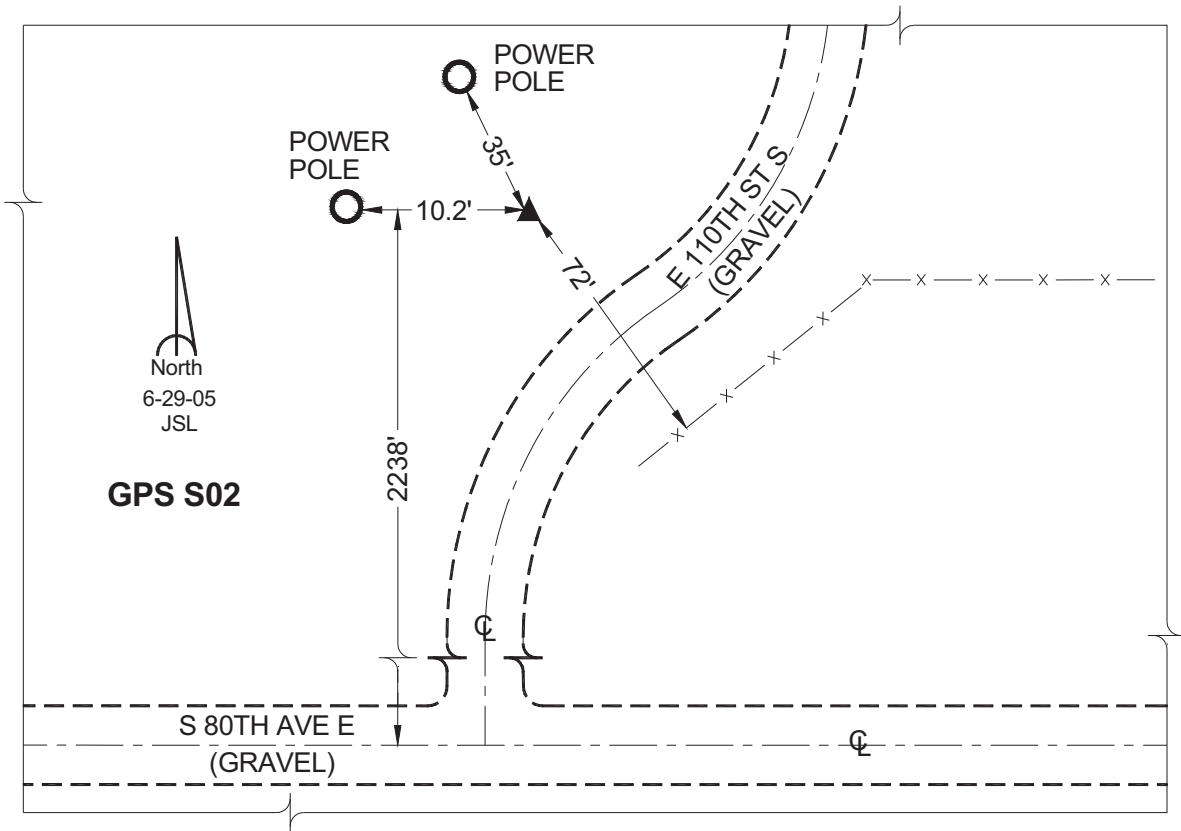
Northing: **584164.80sft** Easting: **1810247.03sft**

Orthometric Height: **911.35sft** Ellipsoid Height: **806.38sft** **Geoid03**

Latitude: **41°36'06.09596"** Longitude: **92°52'44.55879"**

Mapping Angle: **0°24'32"** Combination Scale Factor: **0.99993432**

Monument Type: Cast in-place concrete monument with aluminum disk.



This document was prepared by GBC and DCI for use by Jasper County, Iowa.