

**Jasper County, Iowa**  
Iowa South Zone (1402)  
Horiz. Datum: NAD83(1996)  
Vert. Datum: NAVD 1988  
US Survey Feet  
**2005**

Point Name: **S03**

**Designation:** Jasper County GPS Monument S03-2005

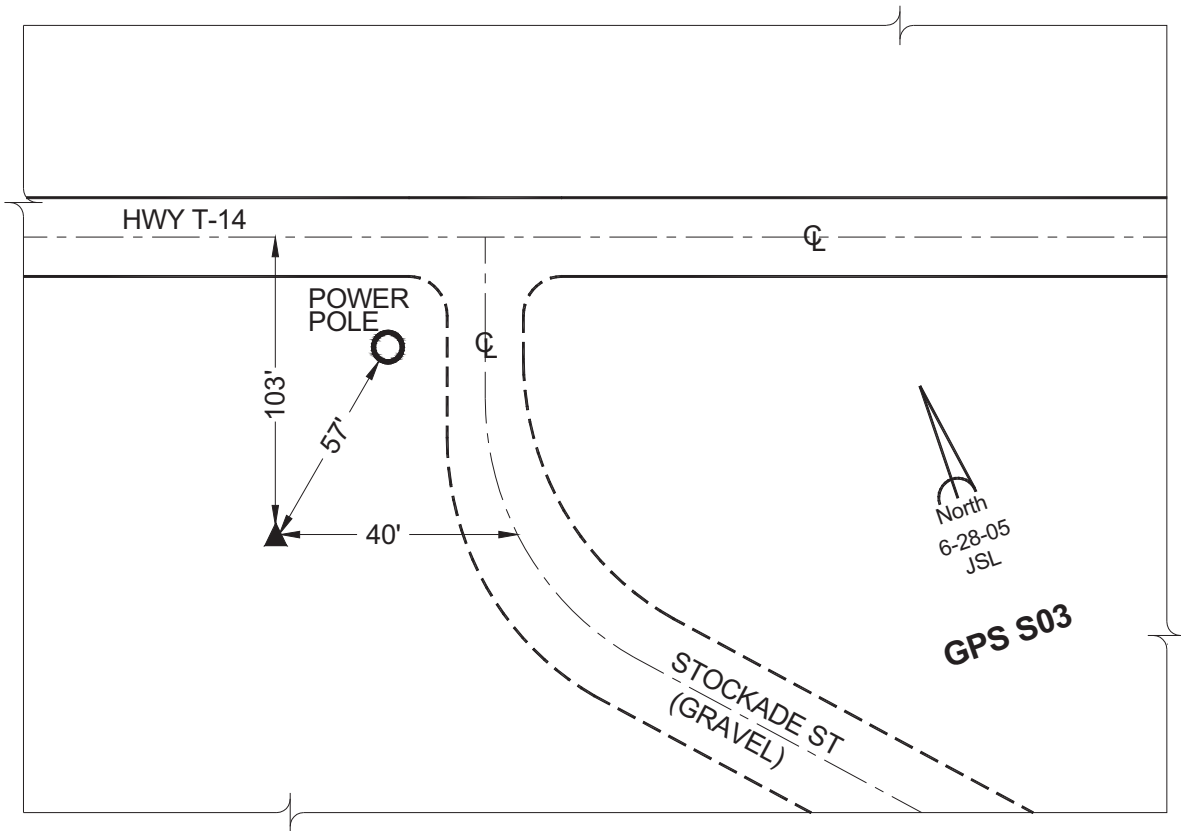
Northing: **564675.66sft** Easting: **1796532.85sft**

Orthometric Height: **877.50sft** Ellipsoid Height: **772.45sft** **Geoid03**

Latitude: **41°32'54.47688"** Longitude: **92°55'46.75233"**

Mapping Angle: **0°22'32"** Combination Scale Factor: **0.99992988**

**Monument Type:** Cast in-place concrete monument with aluminum disk.



*This document was prepared by GBC and DCI for use by Jasper County, Iowa.*