

Jasper County, Iowa
Iowa South Zone (1402)
Horiz. Datum: NAD83(1996)
Vert. Datum: NAVD 1988
US Survey Feet
2005

Point Name: **S04**

Designation: Jasper County GPS Monument S04-2005

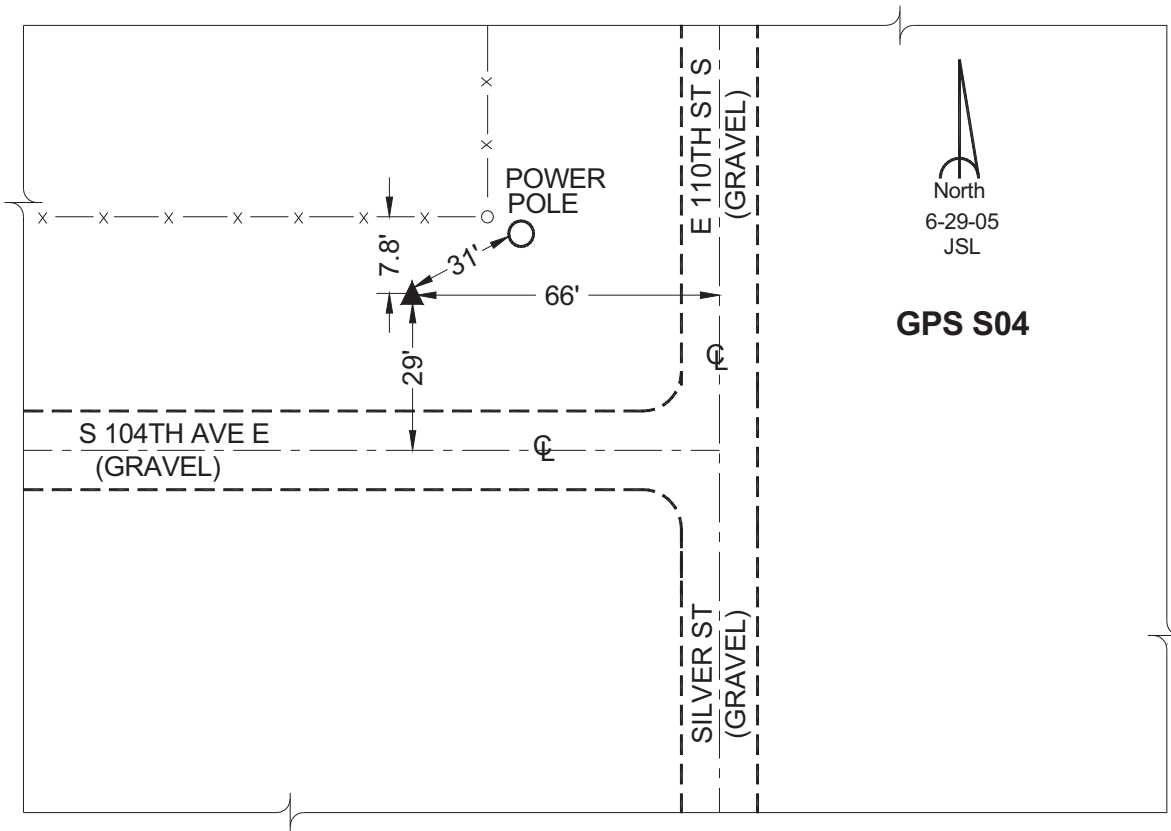
Northing: **566070.38sft** Easting: **1811028.72sft**

Orthometric Height: **841.86sft** Ellipsoid Height: **736.73sft** **Geoid03**

Latitude: **41°33'07.27362"** Longitude: **92°52'35.97668"**

Mapping Angle: **0°24'38"** Combination Scale Factor: **0.99993196**

Monument Type: Cast in-place concrete monument with aluminum disk.



This document was prepared by GBC and DCI for use by Jasper County, Iowa.