

Jasper County, Iowa
Iowa South Zone (1402)
Horiz. Datum: NAD83(1996)
Vert. Datum: NAVD 1988
US Survey Feet
2005

Point Name: **S05**

Designation: Jasper County GPS Monument S05-2005

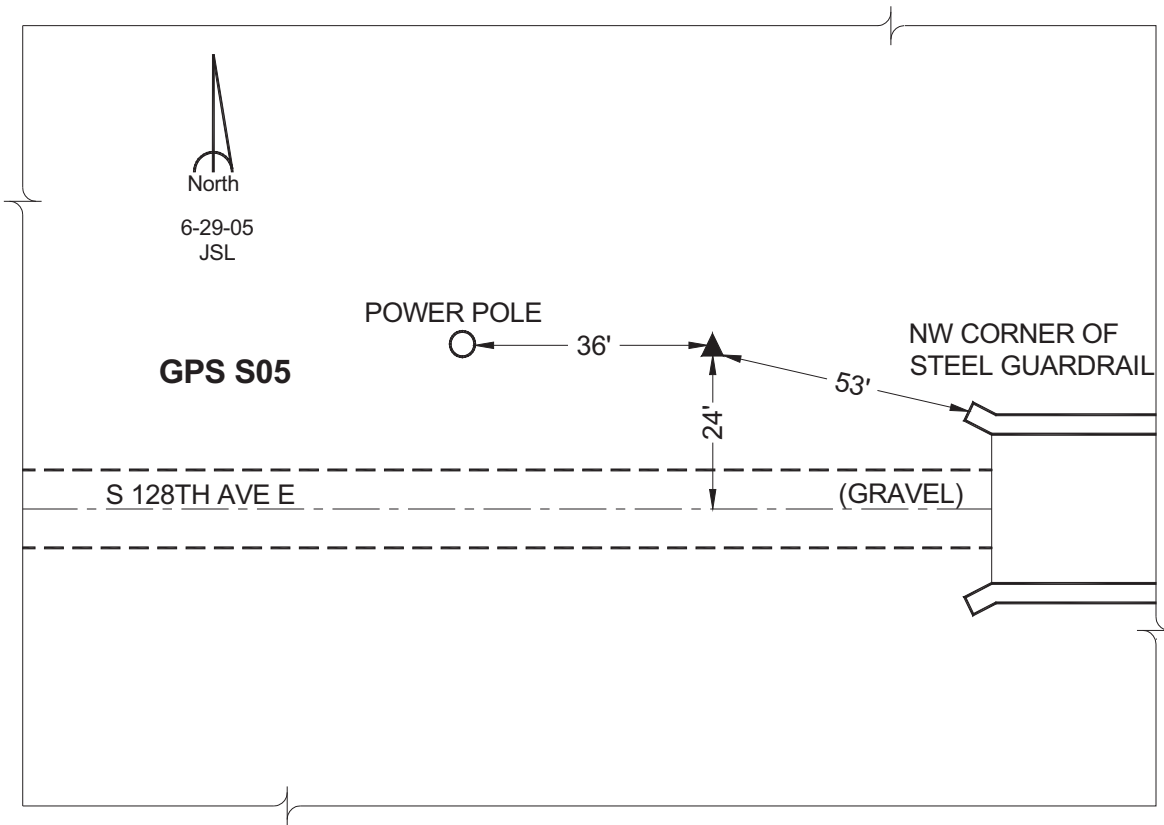
Northing: **550089.35sft** Easting: **1795570.22sft**

Orthometric Height: **744.77sft** Ellipsoid Height: **639.50sft** **Geoid03**

Latitude: **41°30'30.42835"** Longitude: **92°56'00.66190"**

Mapping Angle: **0°22'23"** Combination Scale Factor: **0.99993223**

Monument Type: Cast in-place concrete monument with aluminum disk.



This document was prepared by GBC and DCI for use by Jasper County, Iowa.