

Jasper County, Iowa
Iowa South Zone (1402)
Horiz. Datum: NAD83(1996)
Vert. Datum: NAVD 1988
US Survey Feet
2005

Point Name: **S06**

Designation: Jasper County GPS Monument S06-2005

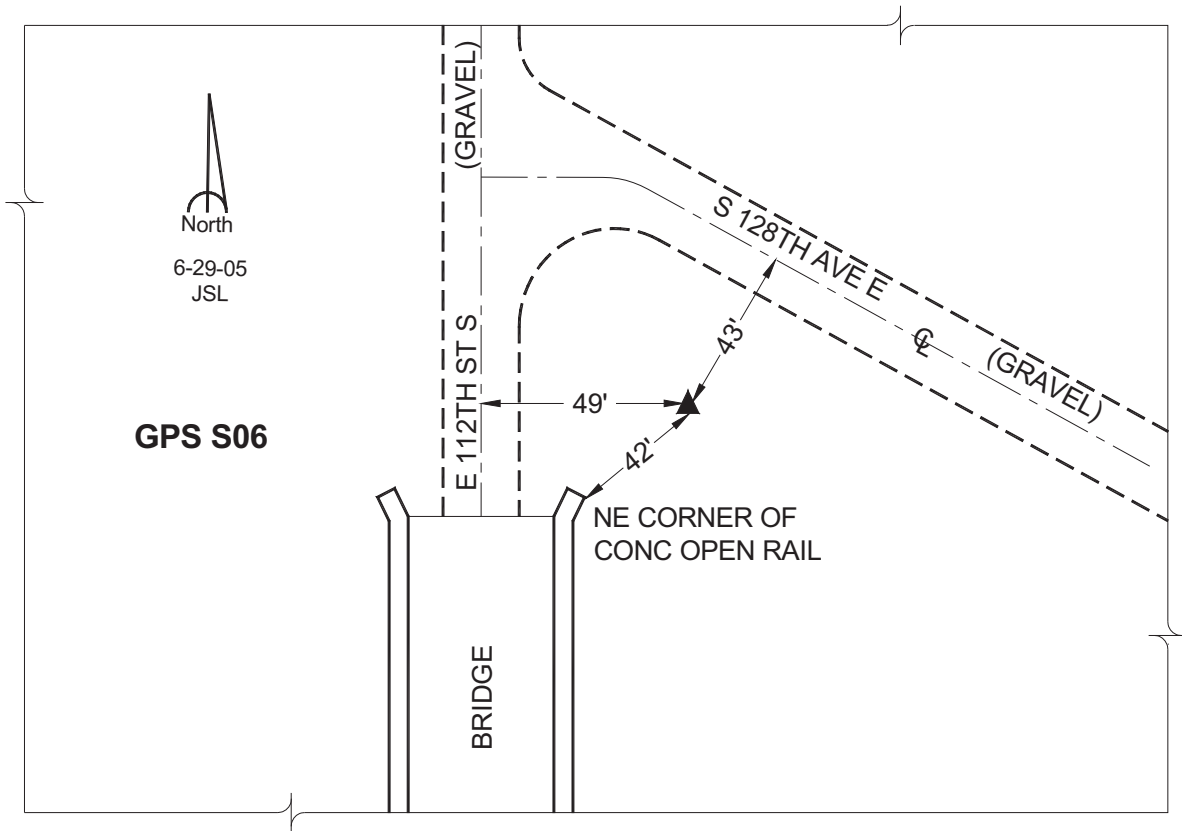
Northing: **551176.36sft** Easting: **1812617.75sft**

Orthometric Height: **748.27sft** Ellipsoid Height: **642.92sft** **Geoid03**

Latitude: **41°30'40.01068"** Longitude: **92°52'16.49338"**

Mapping Angle: **0°24'51"** Combination Scale Factor: **0.99993232**

Monument Type: Cast in-place concrete monument with aluminum disk.



This document was prepared by GBC and DCI for use by Jasper County, Iowa.