

Jasper County, Iowa
Iowa South Zone (1402)
Horiz. Datum: NAD83(1996)
Vert. Datum: NAVD 1988
US Survey Feet
2005

Point Name: **T01**

Designation: Jasper County GPS Monument T01-2005

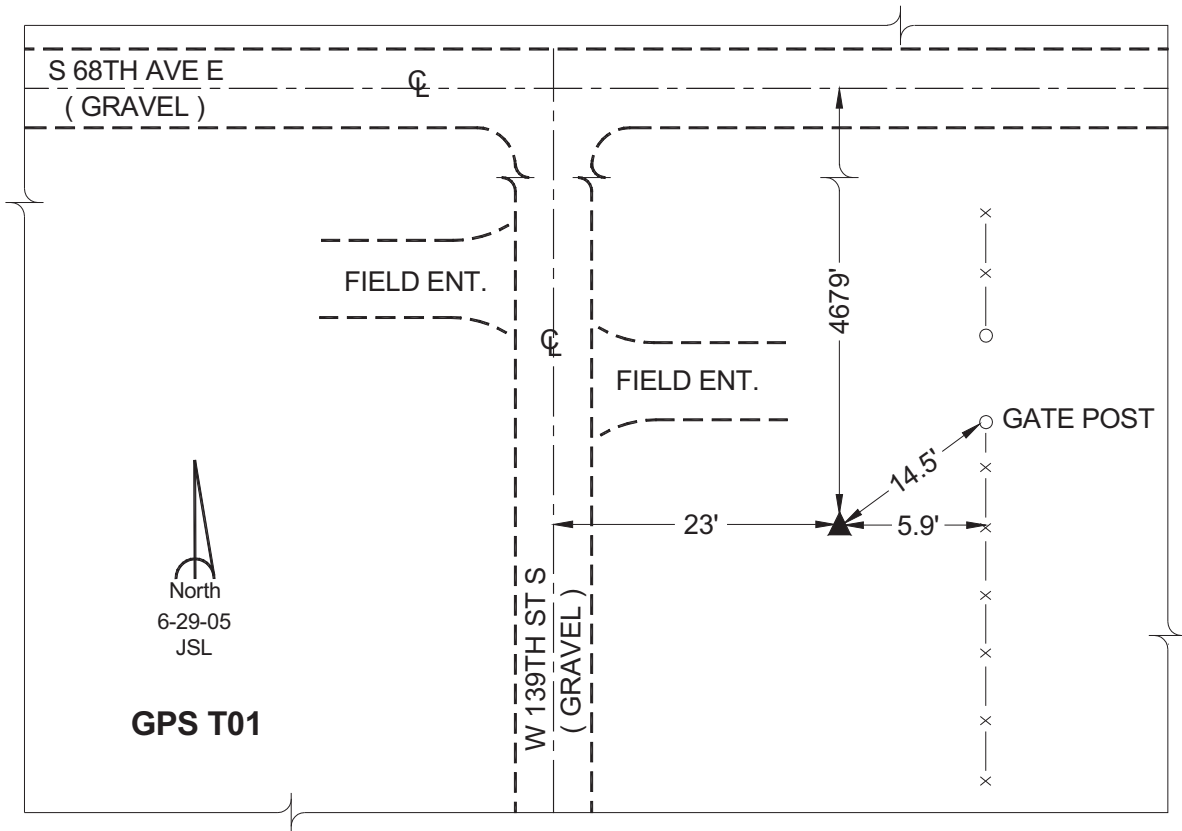
Northing: **584861.15sft** Easting: **1825174.74sft**

Orthometric Height: **865.87sft** Ellipsoid Height: **760.60sft** **Geoid03**

Latitude: **41°36'11.87649"** Longitude: **92°49'28.00491"**

Mapping Angle: **0°26'42"** Combination Scale Factor: **0.99993670**

Monument Type: Cast in-place concrete monument with aluminum disk.



This document was prepared by GBC and DCI for use by Jasper County, Iowa.