

**Jasper County, Iowa**  
Iowa South Zone (1402)  
Horiz. Datum: NAD83(1996)  
Vert. Datum: NAVD 1988  
US Survey Feet  
**2005**

Point Name: **T02**

**Designation:** Jasper County GPS Monument T02-2005

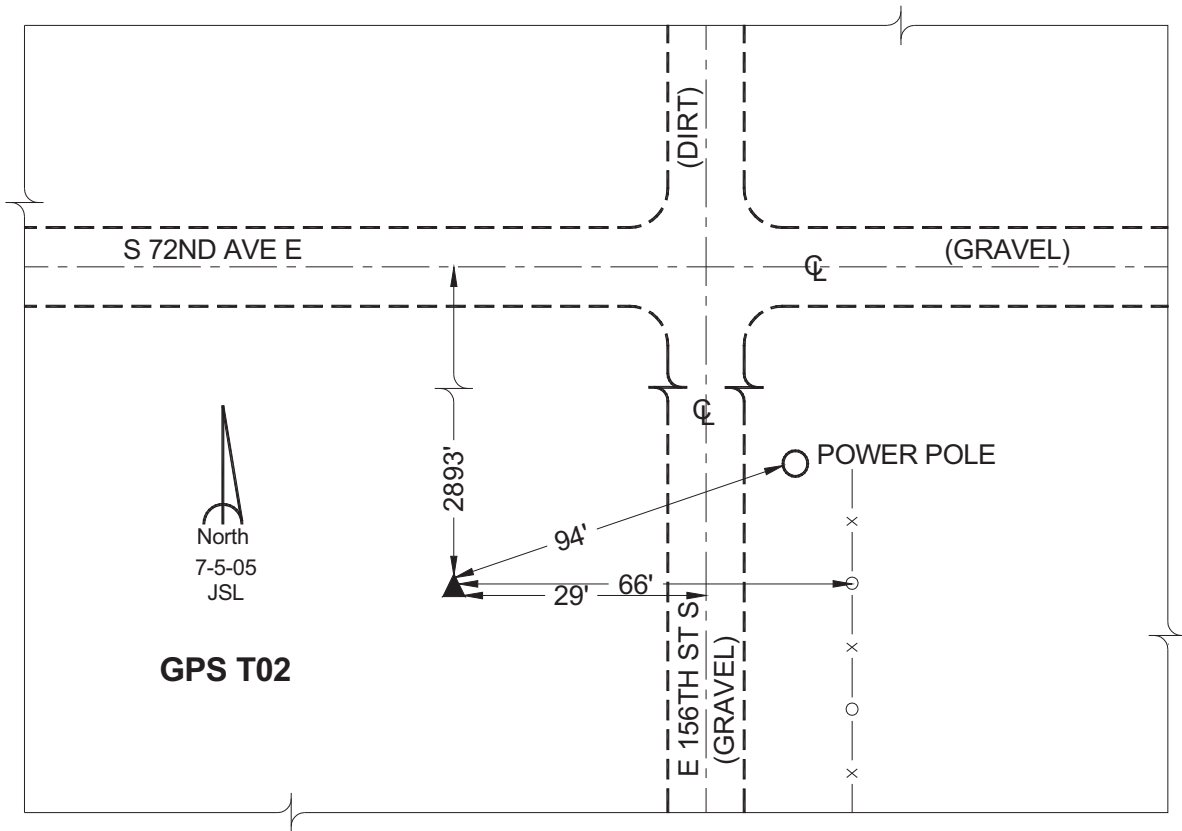
Northing: **584035.18sft**    Easting: **1840931.31sft**

Orthometric Height: **888.44sft**    Ellipsoid Height: **783.10sft**    **Geoid03**

Latitude: **41°36'02.45568"**    Longitude: **92°46'00.70016"**

Mapping Angle: **0°28'59"**    Combination Scale Factor: **0.99993531**

**Monument Type:** Cast in-place concrete monument with aluminum disk.



*This document was prepared by GBC and DCI for use by Jasper County, Iowa.*