

Jasper County, Iowa
Iowa South Zone (1402)
Horiz. Datum: NAD83(1996)
Vert. Datum: NAVD 1988
US Survey Feet
2005

Point Name: **T03**

Designation: Jasper County GPS Monument T03-2005

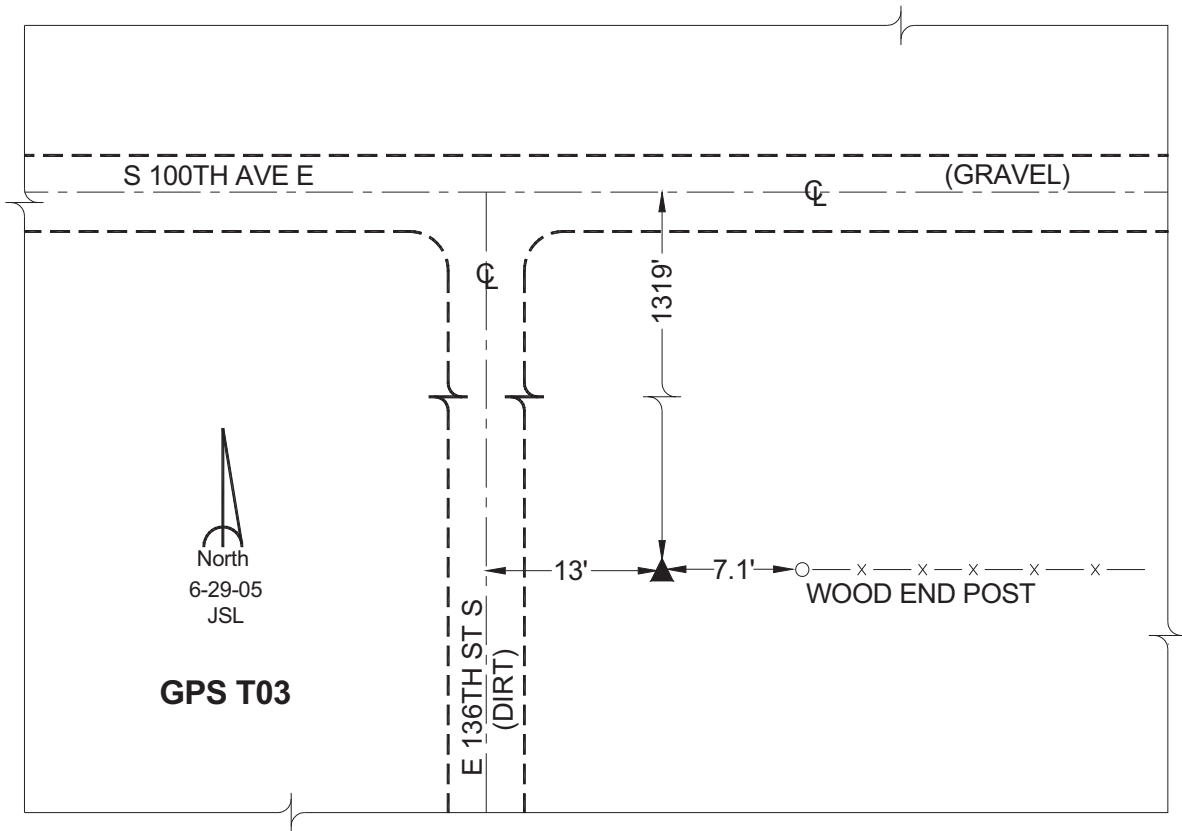
Northing: **567557.66sft** Easting: **1827957.55sft**

Orthometric Height: **910.70sft** Ellipsoid Height: **805.35sft** **Geoid03**

Latitude: **41°33'20.70944"** Longitude: **92°48'53.17027"**

Mapping Angle: **0°27'05"** Combination Scale Factor: **0.99992909**

Monument Type: Cast in-place concrete monument with aluminum disk.



This document was prepared by GBC and DCI for use by Jasper County, Iowa.