

Jasper County, Iowa
 Iowa South Zone (1402)
 Horiz. Datum: NAD83(1996)
 Vert. Datum: NAVD 1988
 US Survey Feet
2005

Point Name: **T04**

Designation: Jasper County GPS Monument T04-2005

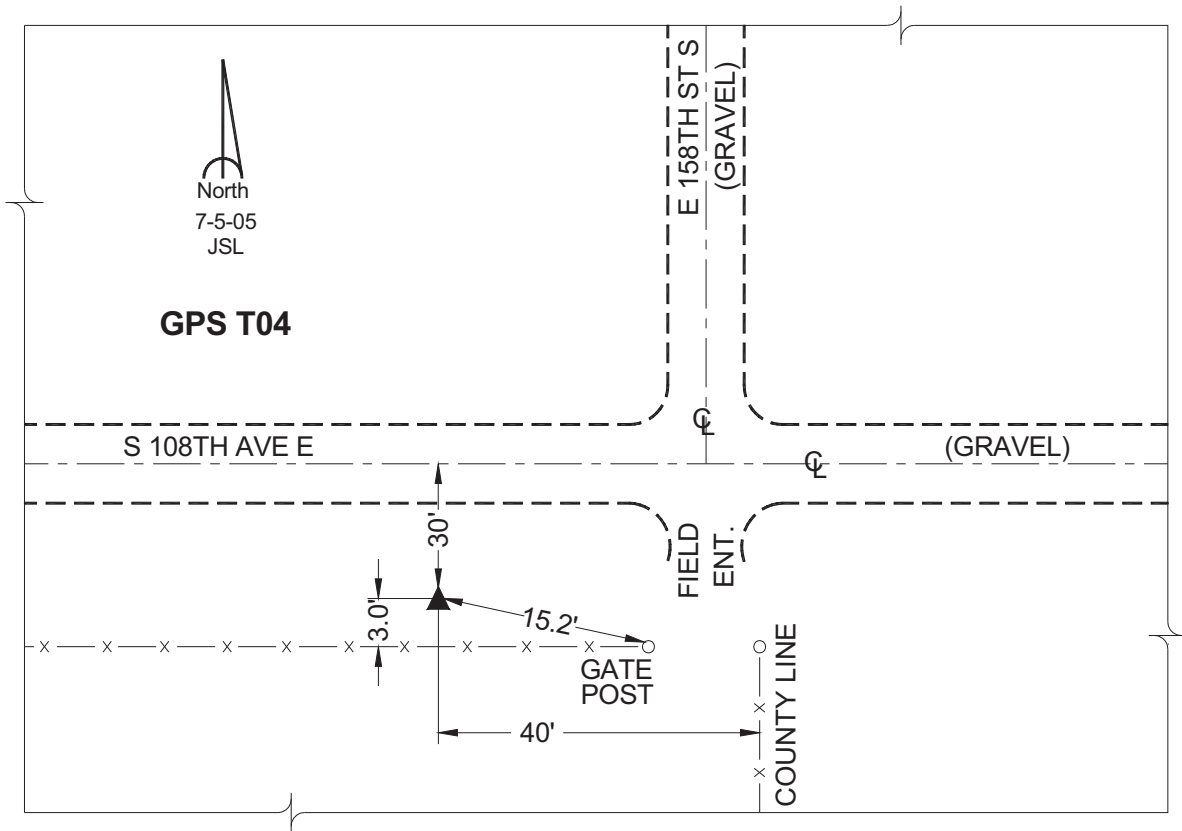
Northing: **563732.66sft** Easting: **1842497.62sft**

Orthometric Height: **877.27sft** Ellipsoid Height: **771.88sft** **Geoid03**

Latitude: **41°32'41.74429"** Longitude: **92°45'42.35238"**

Mapping Angle: **0°29'11"** Combination Scale Factor: **0.99992953**

Monument Type: Cast in-place concrete monument with aluminum disk.



This document was prepared by GBC and DCI for use by Jasper County, Iowa.