

**Jasper County, Iowa**  
Iowa South Zone (1402)  
Horiz. Datum: NAD83(1996)  
Vert. Datum: NAVD 1988  
US Survey Feet  
**2005**

Point Name: **T05**

**Designation:** Jasper County GPS Monument T05-2005

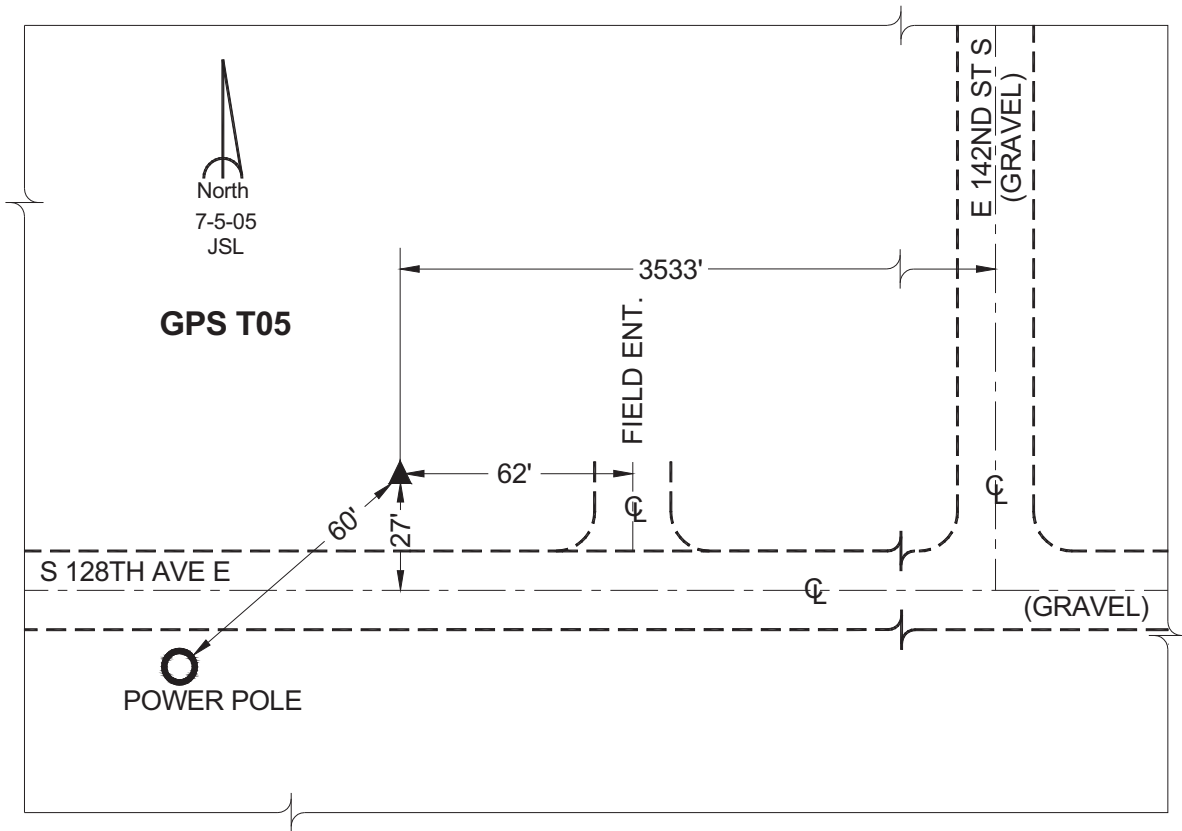
Northing: **550440.60sft**    Easting: **1828622.80sft**

Orthometric Height: **759.51sft**    Ellipsoid Height: **654.11sft**    **Geoid03**

Latitude: **41°30'31.54535"**    Longitude: **92°48'46.19878"**

Mapping Angle: **0°27'09"**    Combination Scale Factor: **0.99993156**

**Monument Type:** Cast in-place concrete monument with aluminum disk.



*This document was prepared by GBC and DCI for use by Jasper County, Iowa.*