

Jasper County, Iowa
Iowa South Zone (1402)
Horiz. Datum: NAD83(1996)
Vert. Datum: NAVD 1988
US Survey Feet
2005

Point Name: **T06**

Designation: Jasper County GPS Monument T06-2005

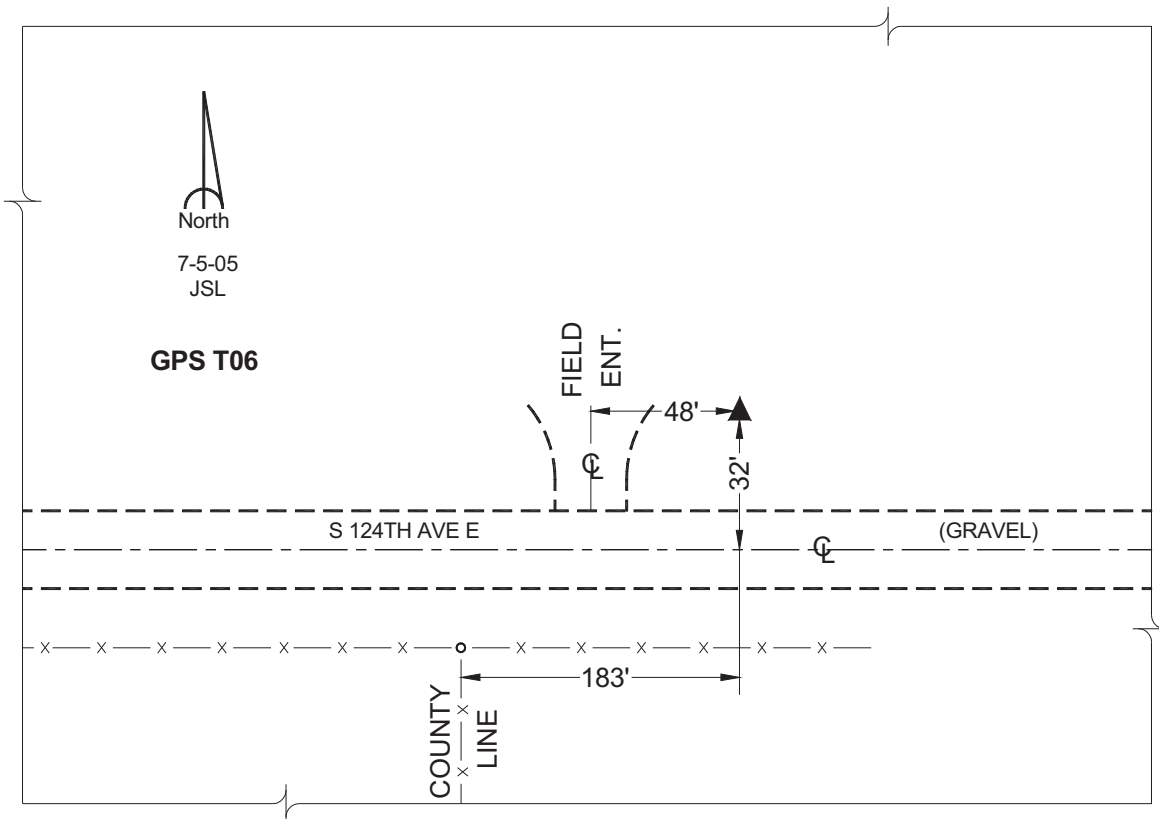
Northing: **553177.98sft** Easting: **1843803.04sft**

Orthometric Height: **883.26sft** Ellipsoid Height: **777.85sft** **Geoid03**

Latitude: **41°30'57.35737"** Longitude: **92°45'26.37032"**

Mapping Angle: **0°29'21"** Combination Scale Factor: **0.99992634**

Monument Type: Cast in-place concrete monument with aluminum disk.



This document was prepared by GBC and DCI for use by Jasper County, Iowa.