

Jefferson County, Iowa
Iowa South Zone (1402)
Horiz. Datum: NAD83(1996)
Vert. Datum: NAVD 1988
US Survey Feet
2005

Point Name: **131**

Designation: 2000-131 Van Buren Co GPS Control Pt. (Set by ASI in 2000)

Northing: **330861.44sft** Easting: **2022902.23sft**

Orthometric Height: **773.30sft** Ellipsoid Height: **665.51sft** **Geoid03**

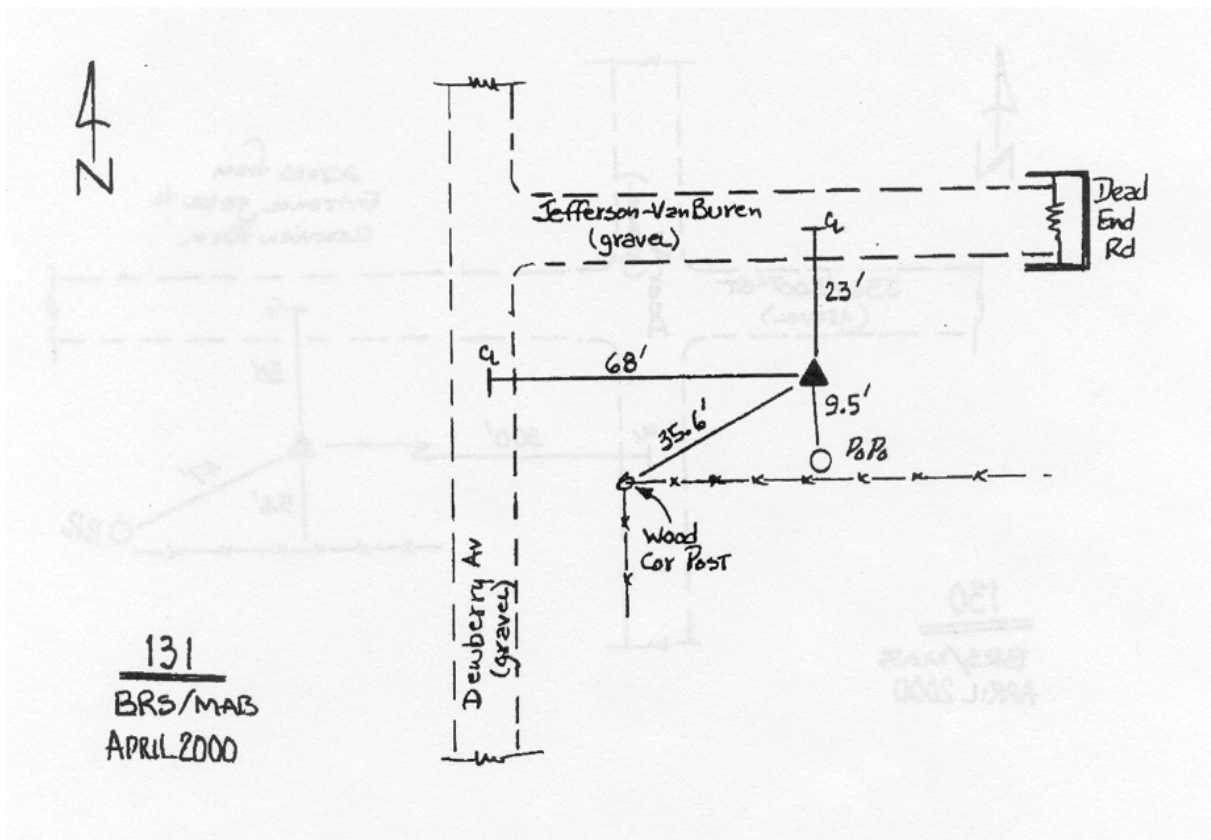
Latitude: **40°53'59.22718"N**

Longitude: **92°06'58.80129"W**

Mapping Angle: **0°54'41"**

Combination Scale Factor: **0.99993035**

Monument Type: 5/8" diameter driven aluminum rod with 2 1/2" diameter aluminum survey cap and permanent magnet, encased in 5" dia. PVC pipe with an aluminum access cover.



This document was prepared by DCI for use by Jefferson Co., Iowa.