

**Jefferson County, Iowa**  
Iowa South Zone (1402)  
Horiz. Datum: NAD83(1996)  
Vert. Datum: NAVD 1988  
US Survey Feet  
**2005**

Point Name: **136**

**Designation:** 2000-136 Van Buren Co GPS Control Pt. (Set by ASI in 2000)

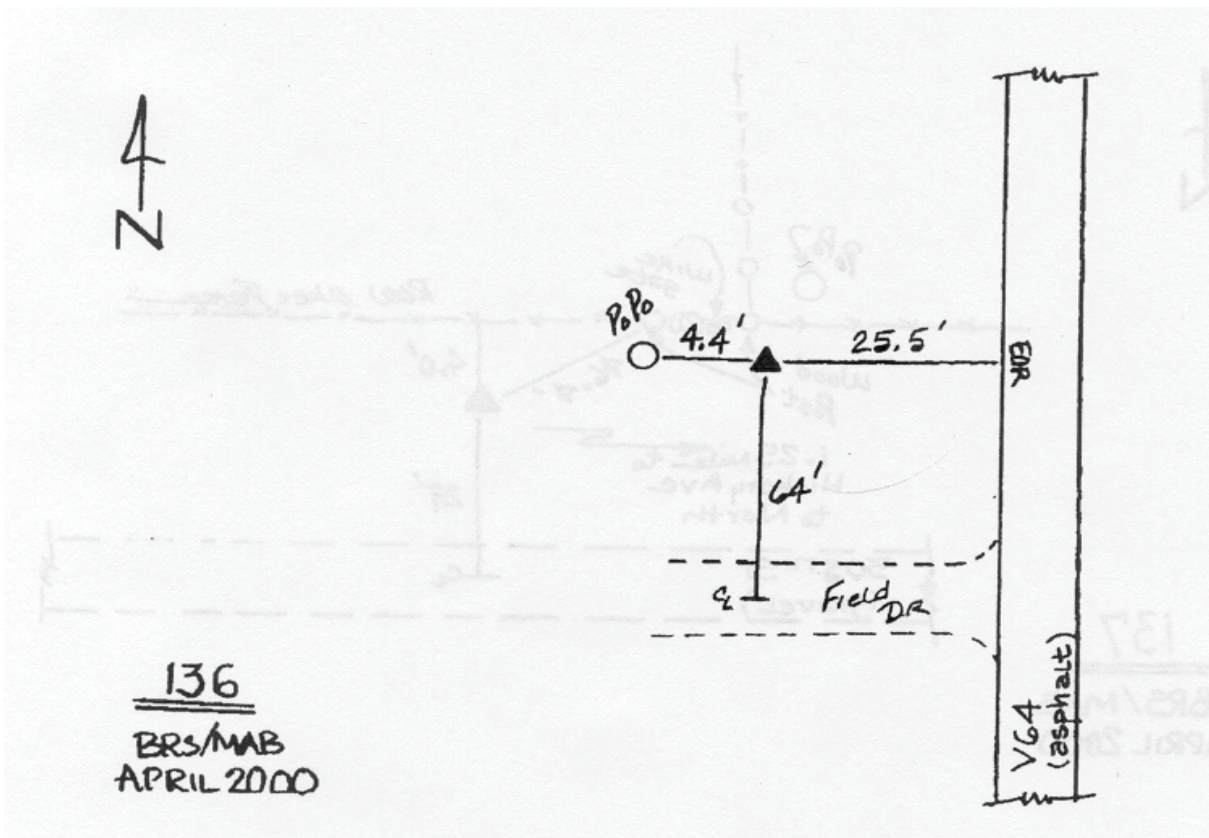
Northing: **330935.06sft** Easting: **2035946.90sft**

Orthometric Height: **752.99sft** Ellipsoid Height: **645.20sft** **Geoid03**

Latitude: **40°53'57.86926"N** Longitude: **92°04'08.93188"W**

Mapping Angle: **0°56'33"** Combination Scale Factor: **0.99993135**

**Monument Type:** 5/8" diameter driven aluminum rod with 2 1/2" diameter aluminum survey cap and permanent magnet, encased in 5" dia. PVC pipe with an aluminum access cover.



*This document was prepared by DCI for use by Jefferson Co., Iowa.*