

Jefferson County, Iowa
Iowa South Zone (1402)
Horiz. Datum: NAD83(1996)
Vert. Datum: NAVD 1988
US Survey Feet
2005

Point Name: 152

Designation: 2000-152 Van Buren Co GPS Control Pt. (Set by ASI in 2000)

Northing: 325213.96sft Easting: 2117075.56sft

Orthometric Height: 733.02sft Ellipsoid Height: 624.83sft Geoid03

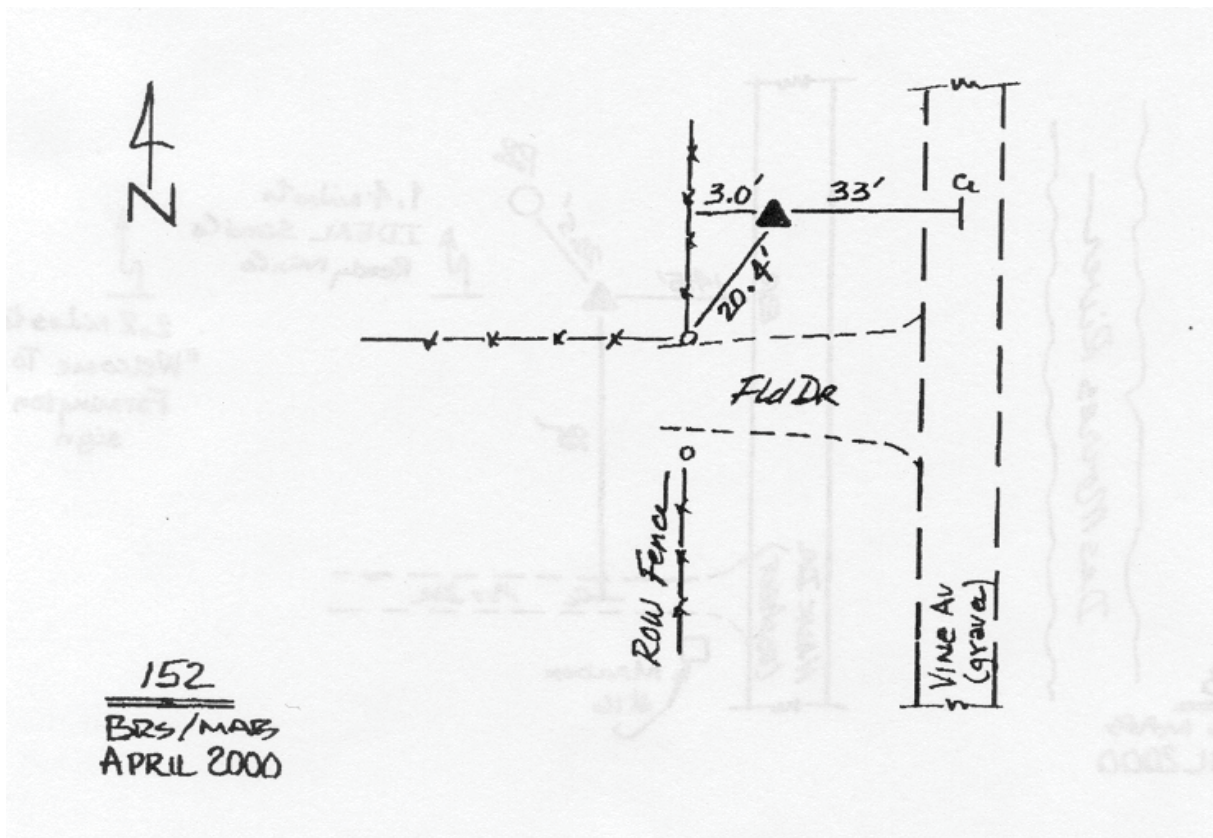
Latitude: 40°52'46.81090"N

Longitude: 91°46'34.10694"W

Mapping Angle: 1°08'08"

Combination Scale Factor: 0.99993418

Monument Type: 5/8" diameter driven aluminum rod with 2 1/2" diameter aluminum survey cap and permanent magnet, encased in 5" dia. PVC pipe with an aluminum access cover.



This document was prepared by DCI for use by Jefferson Co., Iowa.