

Jefferson County, Iowa
Iowa South Zone (1402)
Horiz. Datum: NAD83(1996)
Vert. Datum: NAVD 1988
US Survey Feet
2005

Point Name: **160**

Designation: 2000-160 Van Buren Co GPS Control Pt. (Set by ASI in 2000)

Northing: **333280.29sft** Easting: **2132946.96sft**

Orthometric Height: **735.11sft** Ellipsoid Height: **626.94sft** **Geoid03**

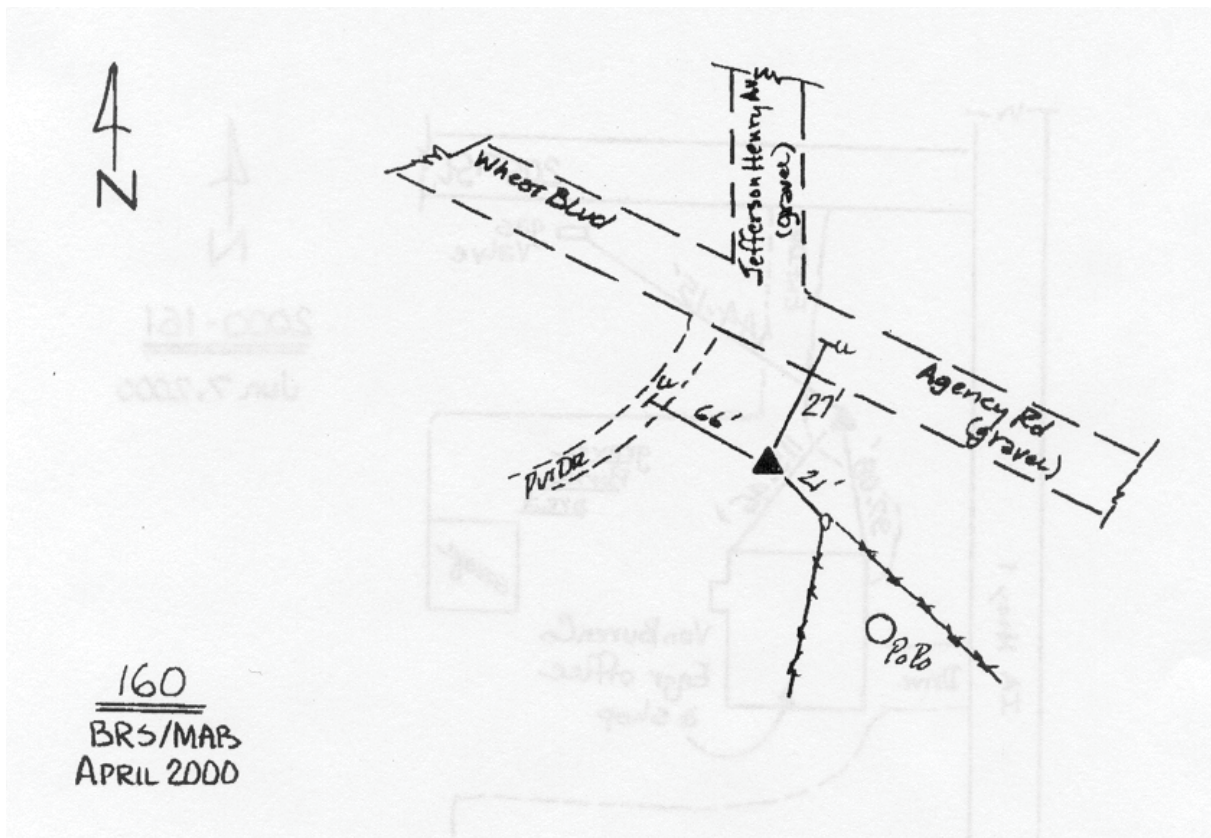
Latitude: **40°54'03.33946"N**

Longitude: **91°43'05.37398"W**

Mapping Angle: **1°10'25"**

Combination Scale Factor: **0.99993208**

Monument Type: 5/8" diameter driven aluminum rod with 2 1/2" diameter aluminum survey cap and permanent magnet, encased in 5" dia. PVC pipe with an aluminum access cover.



This document was prepared by DCI for use by Jefferson Co., Iowa.