

Jefferson County, Iowa
Iowa South Zone (1402)
Horiz. Datum: NAD83(1996)
Vert. Datum: NAVD 1988
US Survey Feet
2005

Point Name: 162

Designation: 96-162 Washington Co GPS Control Pt. (Set by ASI in 1996)

Northing: 427581.29sft Easting: 2089529.68sft

Orthometric Height: 707.28sft Ellipsoid Height: 599.95sft Geoid03

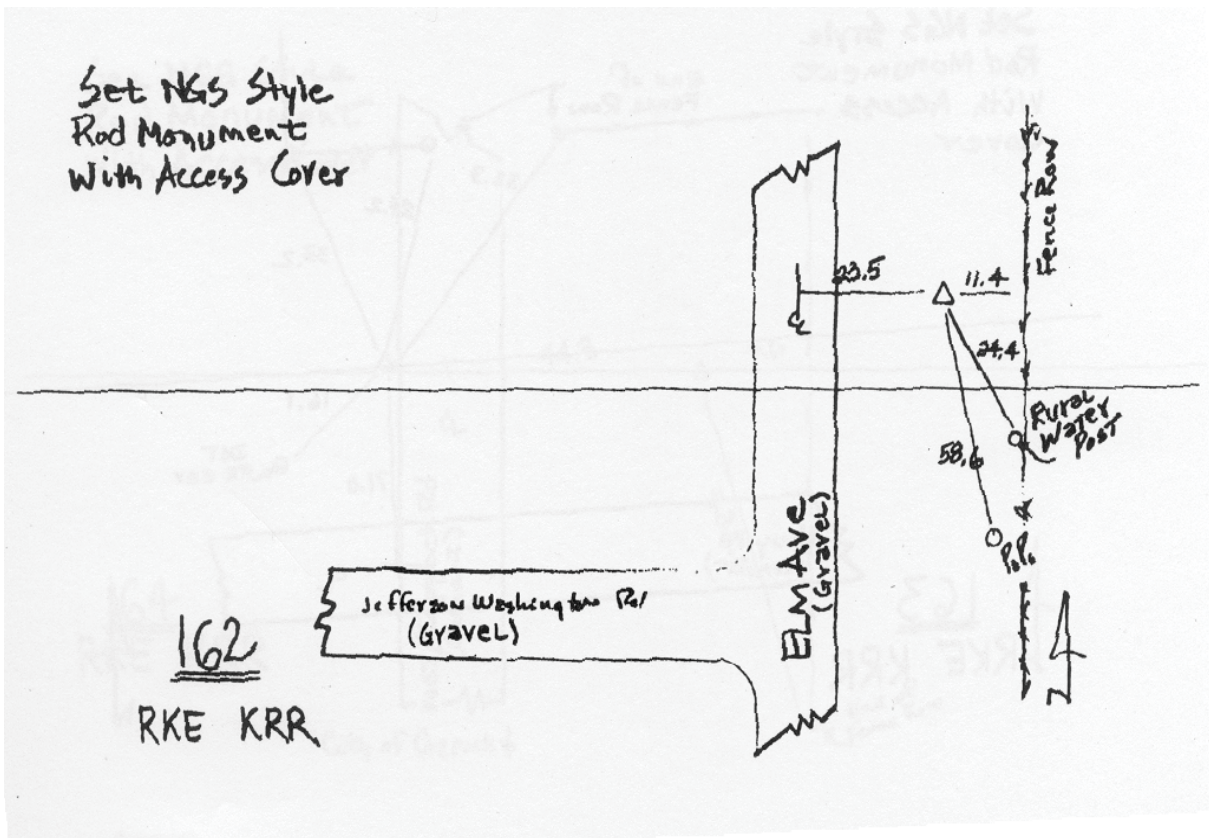
Latitude: 41°09'43.36777"N

Longitude: 91°52'07.66525"W

Mapping Angle: 1°04'28"

Combination Scale Factor: 0.99991997

Monument Type: 5/8" diameter driven aluminum rod with 2 1/2" diameter aluminum survey cap and permanent magnet, encased in 5" dia. PVC pipe with an aluminum access cover.



This document was prepared by DCI for use by Jefferson Co., Iowa.