

Jefferson County, Iowa
Iowa South Zone (1402)
Horiz. Datum: NAD83(1996)
Vert. Datum: NAVD 1988
US Survey Feet
2005

Point Name: 163

Designation: 96-163 Washington Co GPS Control Pt. (Set by ASI in 1996)

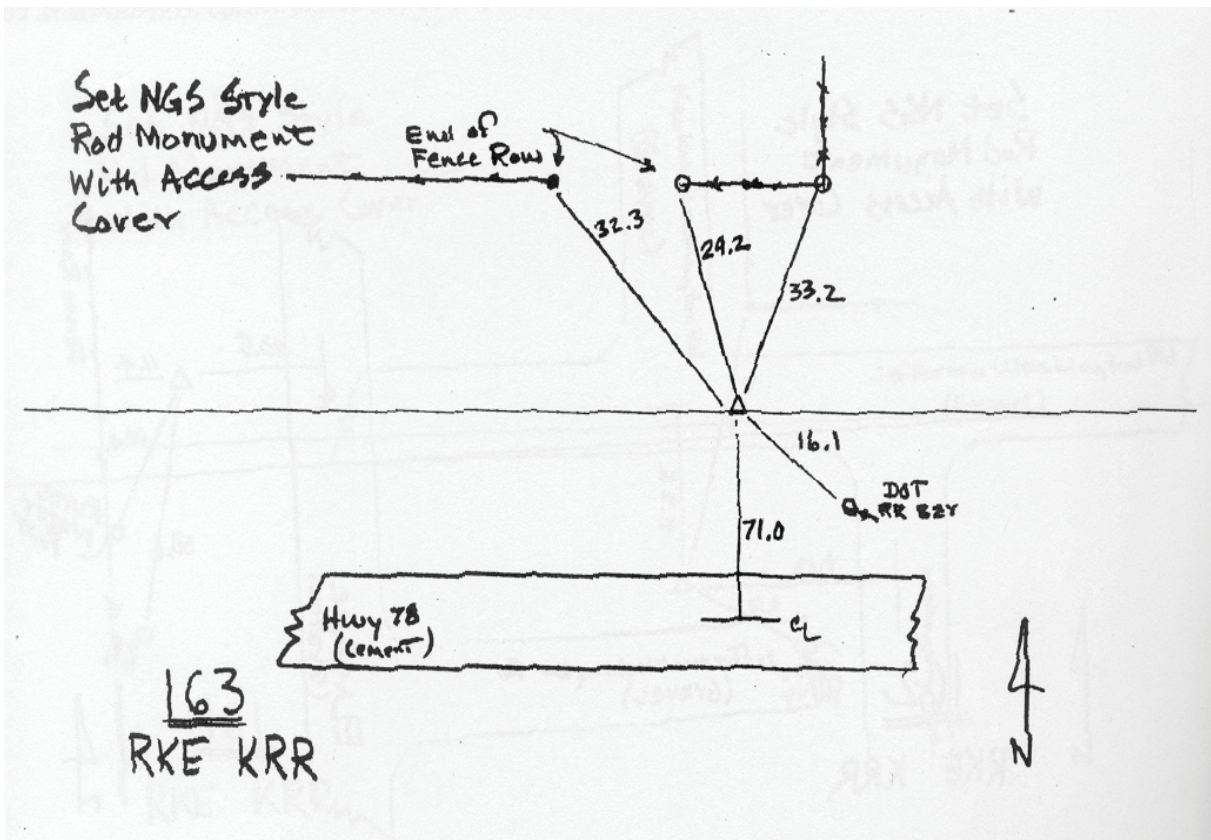
Northing: 427947.58sft Easting: 2110480.93sft

Orthometric Height: 733.81sft Ellipsoid Height: 626.22sft Geoid03

Latitude: 41°09'43.01384"N Longitude: 91°47'33.69396"W

Mapping Angle: 1°07'29" Combination Scale Factor: 0.99991872

Monument Type: 5/8" diameter driven aluminum rod with 2 1/2" diameter aluminum survey cap and permanent magnet, encased in 5" dia. PVC pipe with an aluminum access cover.



This document was prepared by DCI for use by Jefferson Co., Iowa.