

Jefferson County, Iowa
Iowa South Zone (1402)
Horiz. Datum: NAD83(1996)
Vert. Datum: NAVD 1988
US Survey Feet
2005

Point Name: **303**

Designation: 2004-303 Henry Co GPS Control Pt. (Set by ASI in 2004)

Northing: **413358.12sft** Easting: **2134352.14sft**

Orthometric Height: **722.68sft** Ellipsoid Height: **614.95sft** **Geoid03**

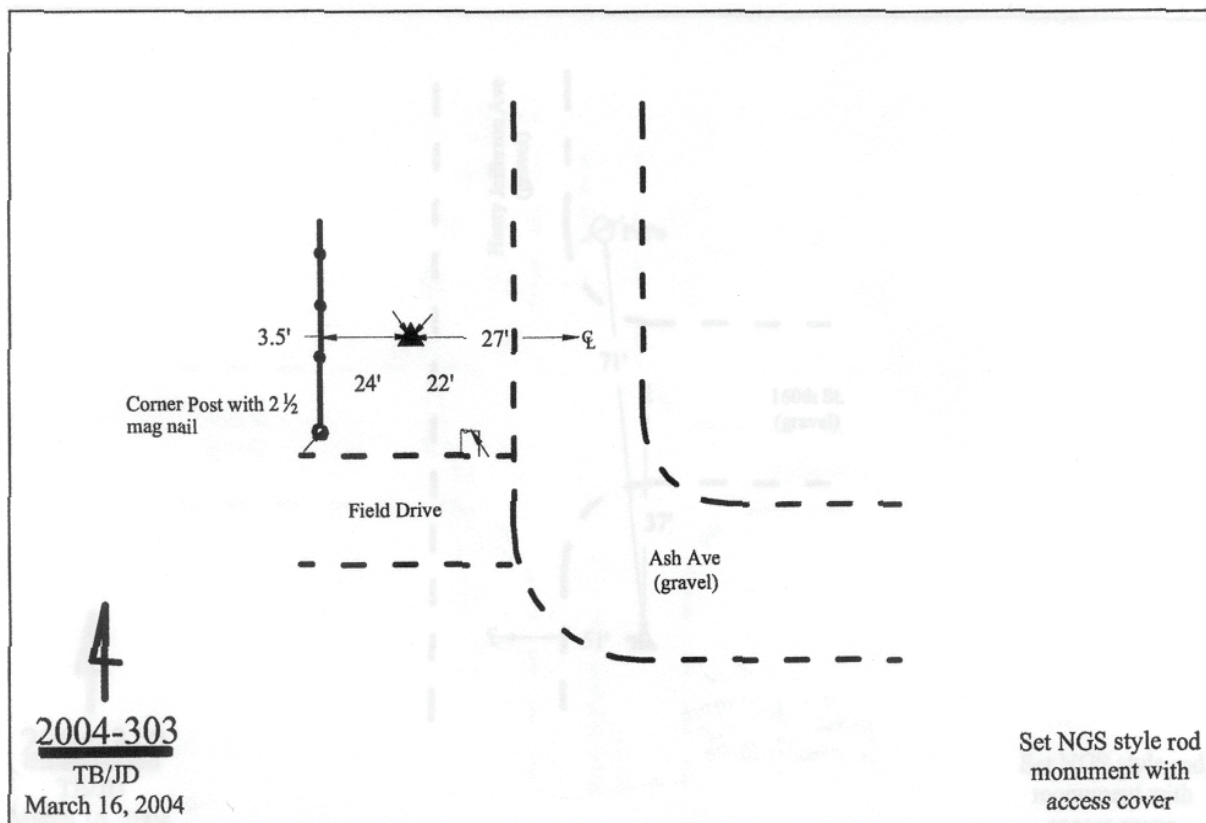
Latitude: **41°07'14.14081"N**

Longitude: **91°42'25.58471"W**

Mapping Angle: **1°10'52"**

Combination Scale Factor: **0.99992000**

Monument Type: 5/8" diameter driven aluminum rod with 2 1/2" diameter aluminum survey cap and permanent magnet, encased in 5" dia. PVC pipe with an aluminum access cover.



This document was prepared by DCI for use by Jefferson Co., Iowa.