

Jefferson County, Iowa
Iowa South Zone (1402)
Horiz. Datum: NAD83(1996)
Vert. Datum: NAVD 1988
US Survey Feet
2005

Point Name: **465**

Designation: 2003-465 Keokuk Co GPS Control Pt. (Set by DCI in 2003)

Northing: **430198.99sft** Easting: **2052339.49sft**

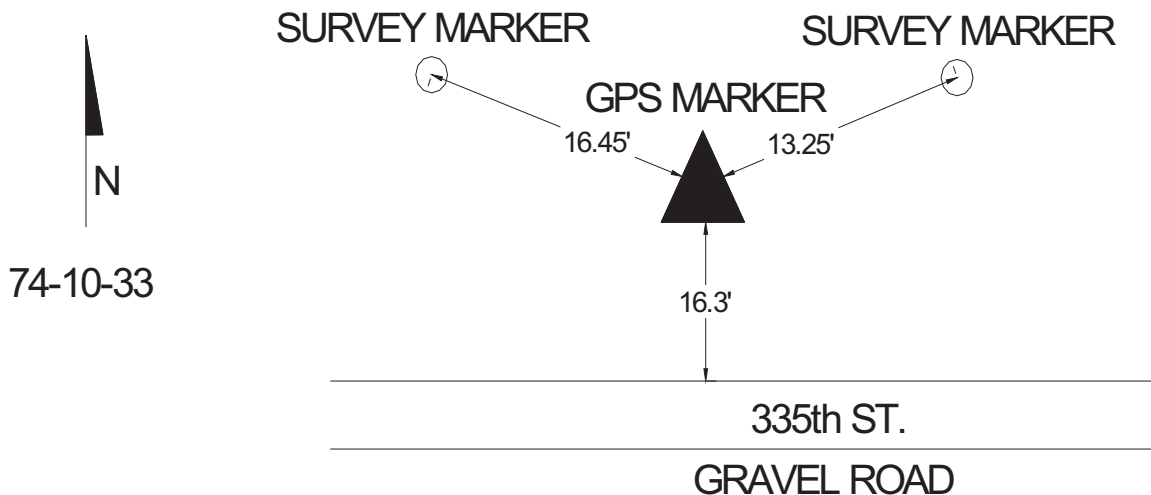
Orthometric Height: **766.43sft** Ellipsoid Height: **659.33sft** **Geoid03**

Latitude: **41°10'15.83465"N** Longitude: **92°00'13.25308"W**

Mapping Angle: **0°59'08"** Combination Scale Factor: **0.99991704**

Monument Type: Berntsen Top Security Rod Monument with a 2-1/2" dia. domed survey cap and permanent magnet encased in a 5"dia. PVC pipe with a NGS style aluminum access cover.

465



This document was prepared by DCI for use by Jefferson Co., Iowa.