

**Jefferson County, Iowa**  
 Iowa South Zone (1402)  
 Horiz. Datum: NAD83(1996)  
 Vert. Datum: NAVD 1988  
 US Survey Feet  
**2005**

Point Name: **501**

**Designation:** 2005-501 Jefferson Co GPS Control Point

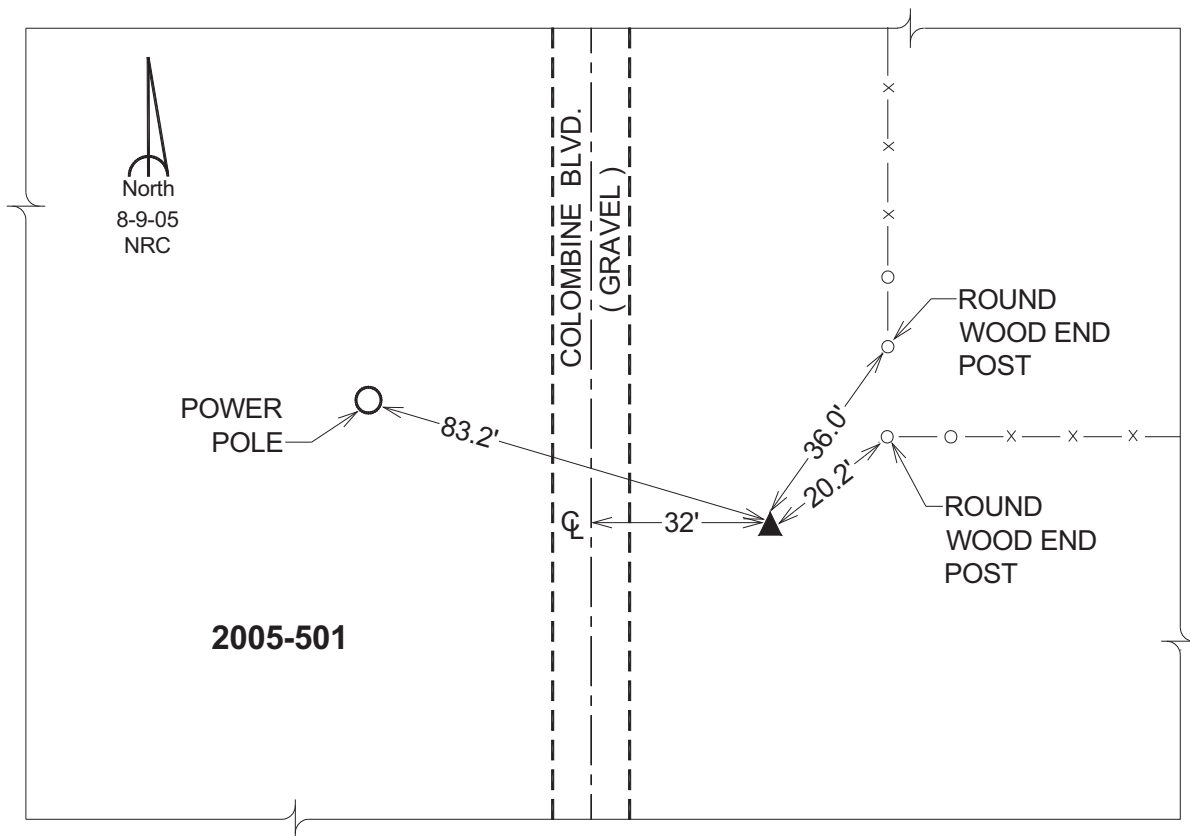
Northing: **410981.11sft** Easting: **2020390.67sft**

Orthometric Height: **797.21sft** Ellipsoid Height: **690.19sft** **Geoid03**

Latitude: **41°07'11.18869"N** Longitude: **92°07'14.96169"W**

Mapping Angle: **0°54'30"** Combination Scale Factor: **0.99991644**

**Monument Type:** Berntsen Top Security Rod Monument with a 2-1/2" dia. domed survey cap and permanent magnet encased in a 5"dia. PVC pipe with a NGS style aluminum access cover.



*This document was prepared by DCI for use by Jefferson Co., Iowa.*