

**Jefferson County, Iowa**  
Iowa South Zone (1402)  
Horiz. Datum: NAD83(1996)  
Vert. Datum: NAVD 1988  
US Survey Feet  
**2005**

Point Name: **502**

**Designation:** 2005-502 Jefferson Co GPS Control Point

Northing: **411414.50**sft Easting: **2036150.81**sft

Orthometric Height: **808.65**sft Ellipsoid Height: **701.59**sft **Geoid03**

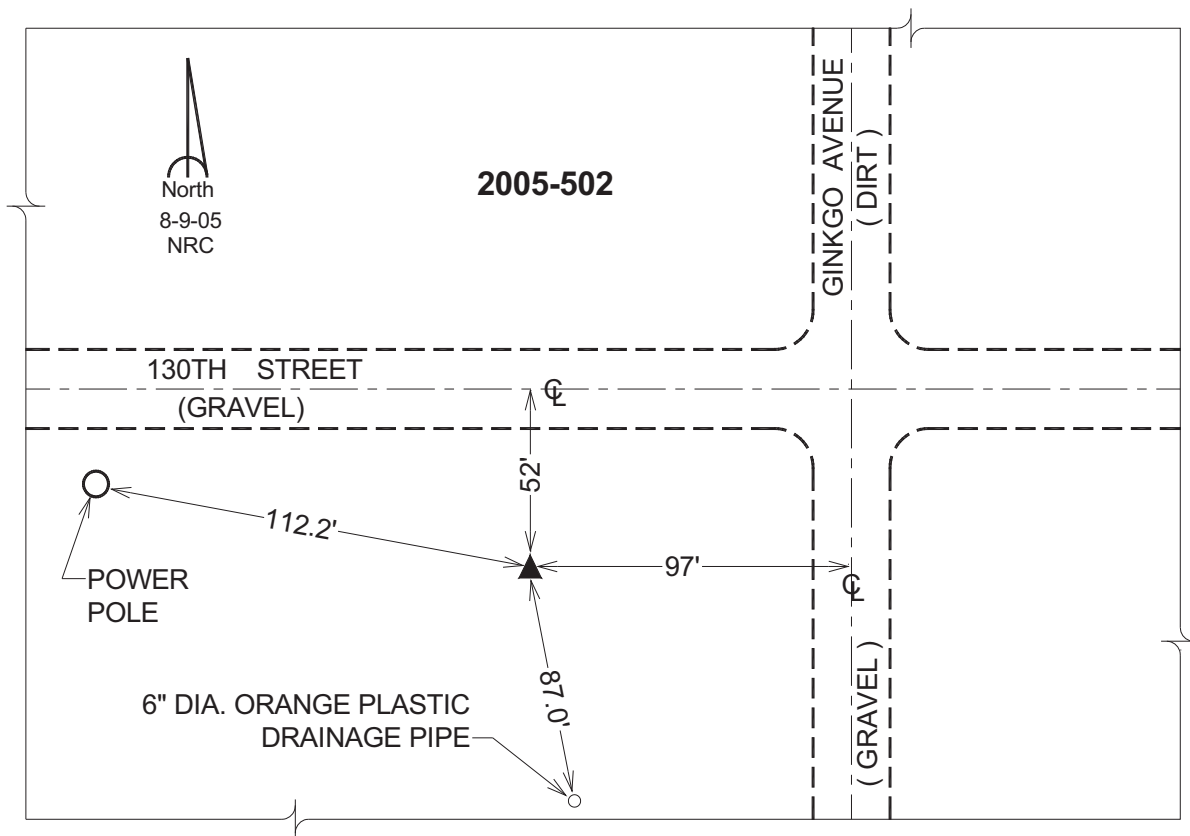
Latitude: **41°07'12.95015"N**

Longitude: **92°03'48.97052"W**

Mapping Angle: **0°56'46"**

Combination Scale Factor: **0.99991588**

**Monument Type:** Berntsen Top Security Rod Monument with a 2-1/2" dia. domed survey cap and permanent magnet encased in a 5"dia. PVC pipe with a NGS style aluminum access cover.



*This document was prepared by DCI for use by Jefferson Co., Iowa.*