

Jefferson County, Iowa
Iowa South Zone (1402)
Horiz. Datum: NAD83(1996)
Vert. Datum: NAVD 1988
US Survey Feet
2005

Point Name: **503**

Designation: 2005-503 Jefferson Co GPS Control Point

Northing: **411470.54sft** Easting: **2052276.98sft**

Orthometric Height: **779.75sft** Ellipsoid Height: **672.62sft** **Geoid03**

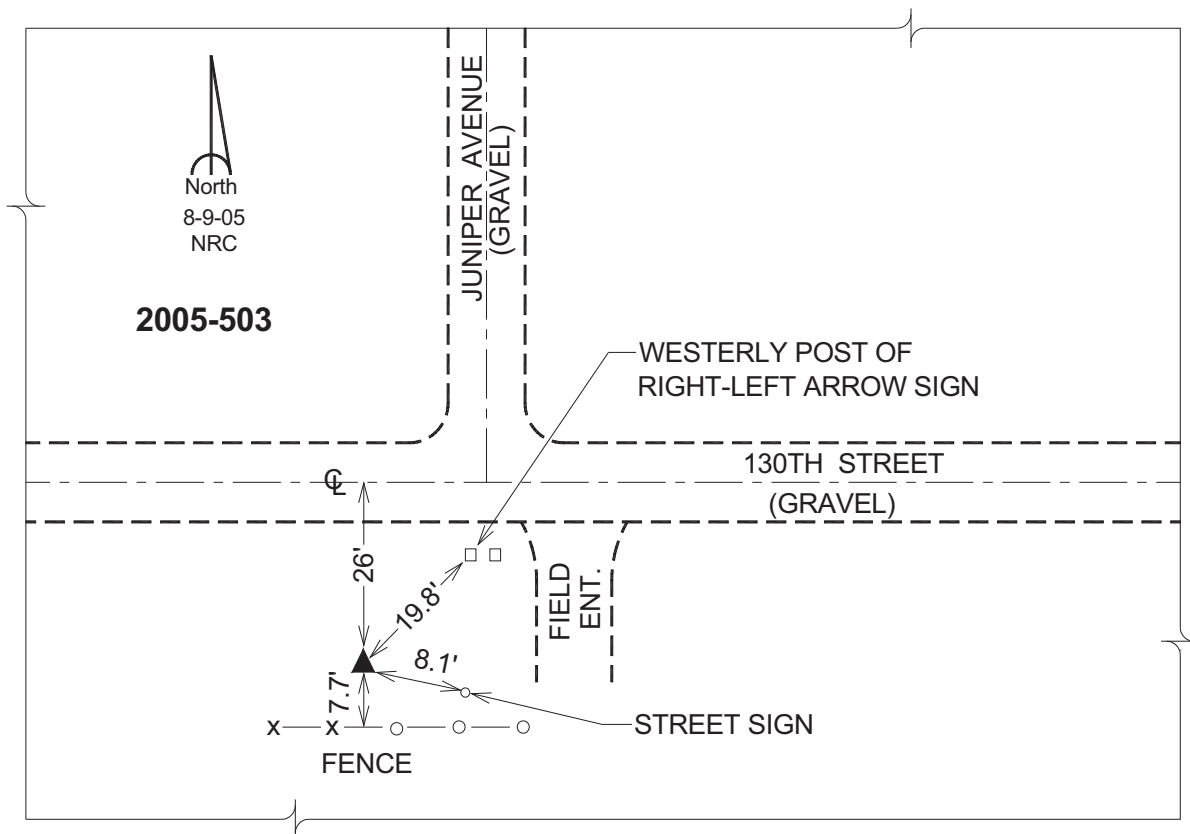
Latitude: **41°07'10.81907"N**

Longitude: **92°00'18.27918"W**

Mapping Angle: **0°59'05"**

Combination Scale Factor: **0.99991728**

Monument Type: Berntsen Top Security Rod Monument with a 2-1/2" dia. domed survey cap and permanent magnet encased in a 5"dia. PVC pipe with a NGS style aluminum access cover.



This document was prepared by DCI for use by Jefferson Co., Iowa.