

Jefferson County, Iowa
Iowa South Zone (1402)
Horiz. Datum: NAD83(1996)
Vert. Datum: NAVD 1988
US Survey Feet
2005

Point Name: **504**

Designation: 2005-504 Jefferson Co GPS Control Point

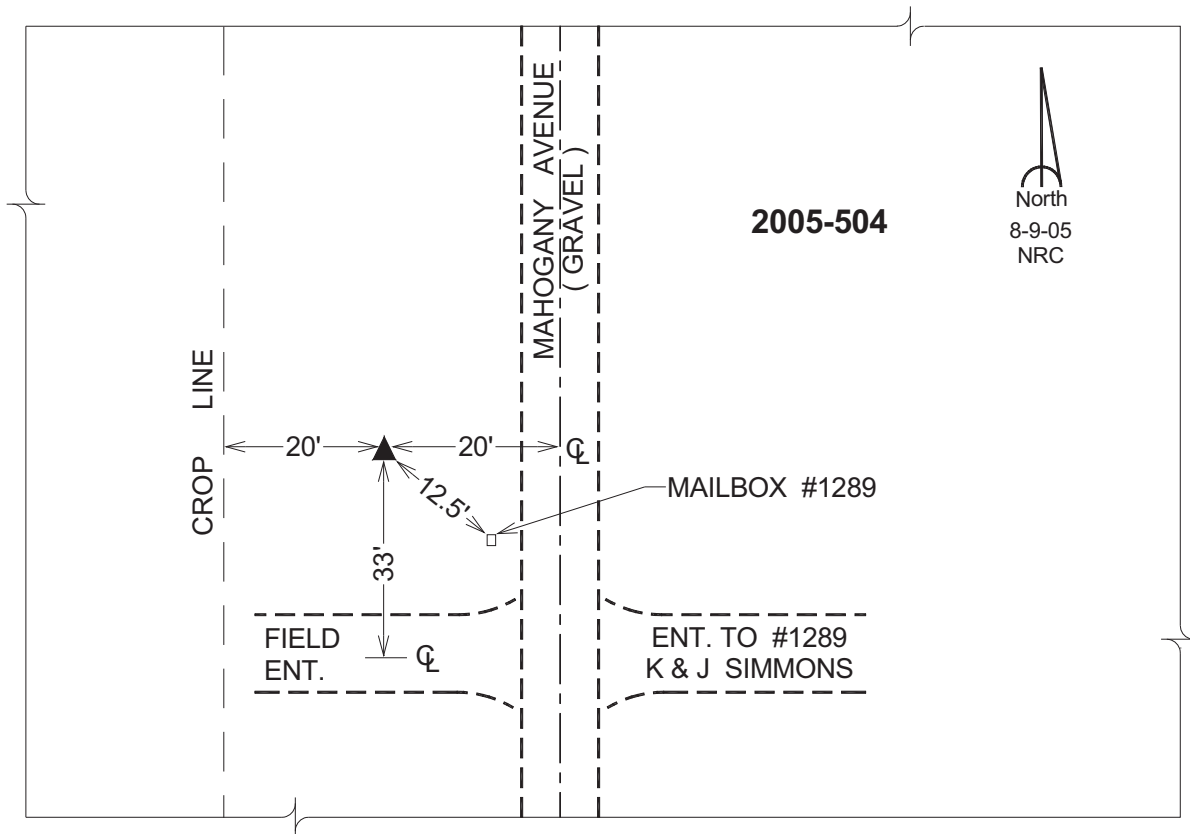
Northing: **412144.57sft** Easting: **2068232.42sft**

Orthometric Height: **751.58sft** Ellipsoid Height: **644.38sft** **Geoid03**

Latitude: **41°07'14.71613"N** Longitude: **91°56'49.67787"W**

Mapping Angle: **1°01'22"** Combination Scale Factor: **0.99991860**

Monument Type: Berntsen Top Security Rod Monument with a 2-1/2" dia. domed survey cap and permanent magnet encased in a 5"dia. PVC pipe with a NGS style aluminum access cover.



This document was prepared by DCI for use by Jefferson Co., Iowa.