

Jefferson County, Iowa
Iowa South Zone (1402)
Horiz. Datum: NAD83(1996)
Vert. Datum: NAVD 1988
US Survey Feet
2005

Point Name: **505**

Designation: 2005-505 Jefferson Co GPS Control Point

Northing: **412048.61sft** Easting: **2085586.64sft**

Orthometric Height: **715.84sft** Ellipsoid Height: **608.50sft** **Geoid03**

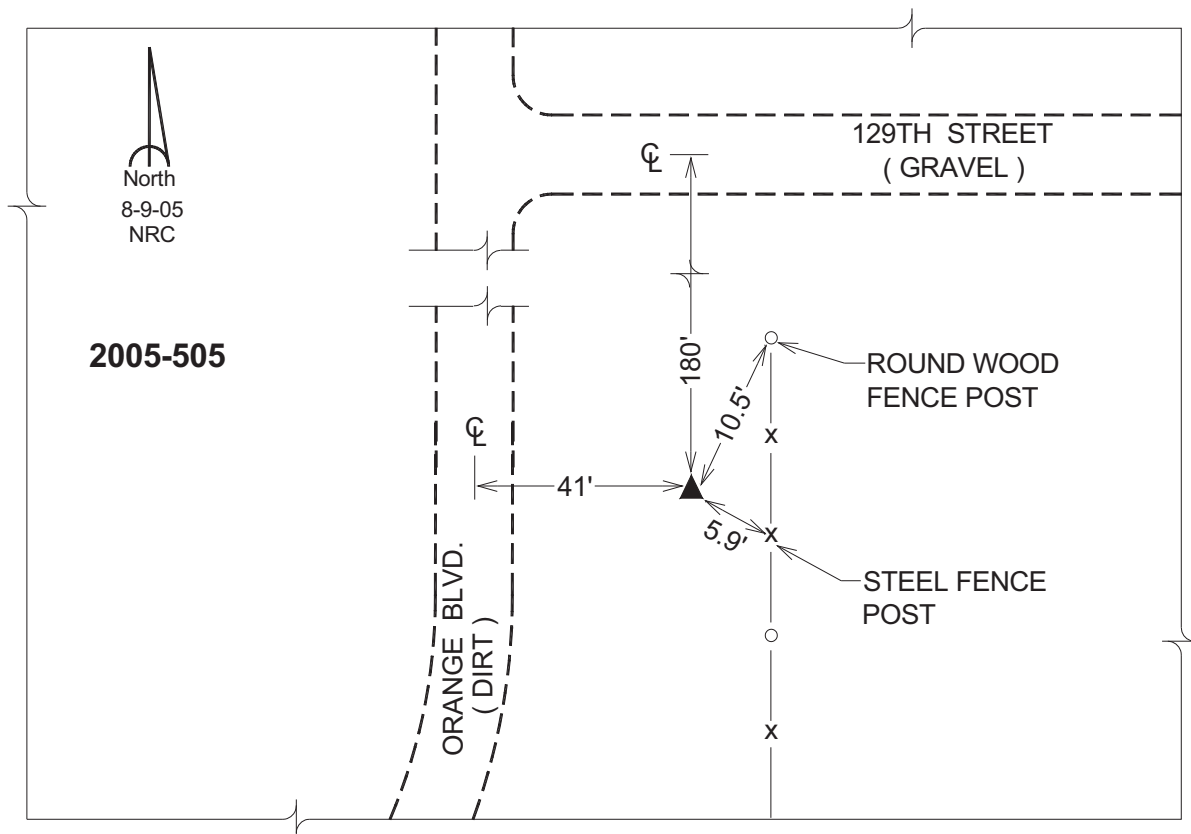
Latitude: **41°07'10.64493"N**

Longitude: **91°53'02.98253"W**

Mapping Angle: **1°03'52"**

Combination Scale Factor: **0.99992034**

Monument Type: Berntsen Top Security Rod Monument with a 2-1/2" dia. domed survey cap and permanent magnet encased in a 5"dia. PVC pipe with a NGS style aluminum access cover.



This document was prepared by DCI for use by Jefferson Co., Iowa.