

**Jefferson County, Iowa**  
Iowa South Zone (1402)  
Horiz. Datum: NAD83(1996)  
Vert. Datum: NAVD 1988  
US Survey Feet  
**2005**

Point Name: **507**

**Designation:** 2005-507 Jefferson Co GPS Control Point

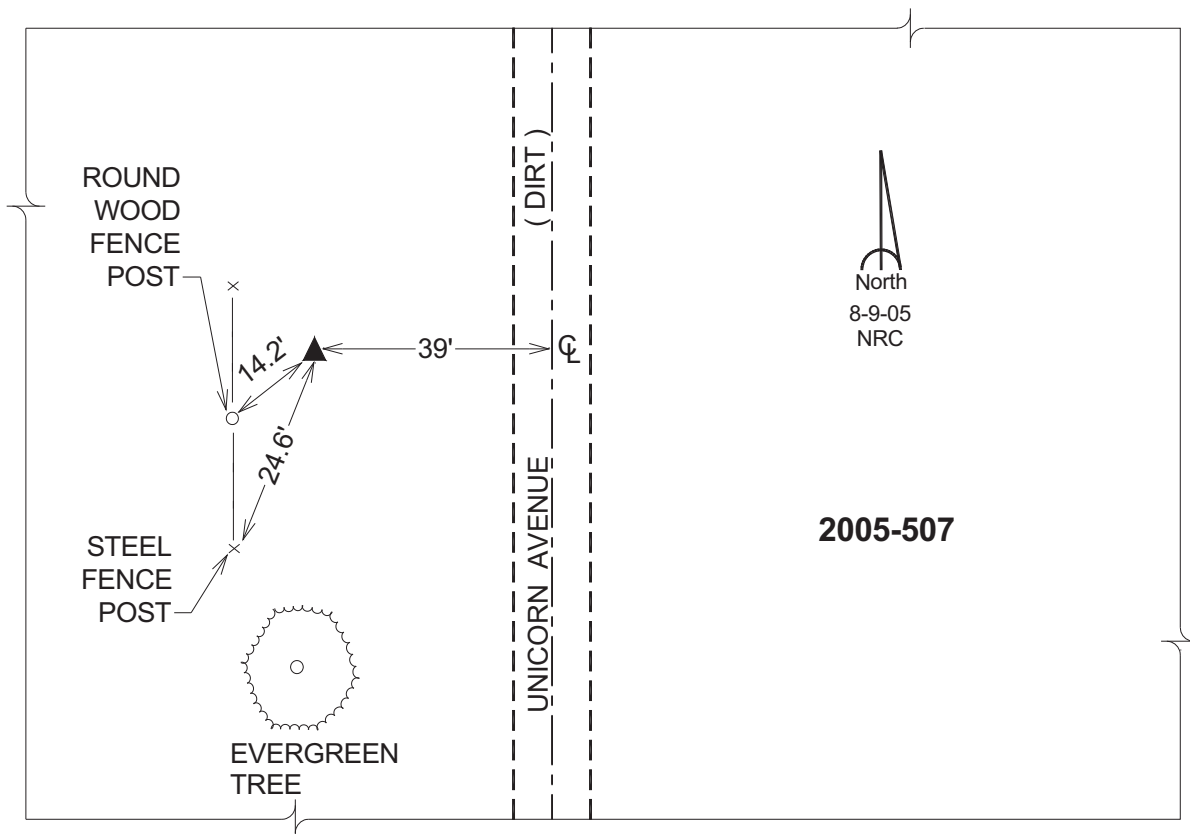
Northing: **411723.16sft** Easting: **2114641.37sft**

Orthometric Height: **696.47sft** Ellipsoid Height: **588.85sft** **Geoid03**

Latitude: **41°07'01.92314"N** Longitude: **91°46'43.50581"W**

Mapping Angle: **1°08'02"** Combination Scale Factor: **0.99992133**

**Monument Type:** Berntsen Top Security Rod Monument with a 2-1/2" dia. domed survey cap and permanent magnet encased in a 5"dia. PVC pipe with a NGS style aluminum access cover.



*This document was prepared by DCI for use by Jefferson Co., Iowa.*