

Jefferson County, Iowa
Iowa South Zone (1402)
Horiz. Datum: NAD83(1996)
Vert. Datum: NAVD 1988
US Survey Feet
2005

Point Name: **508**

Designation: 2005-508 Jefferson Co GPS Control Point

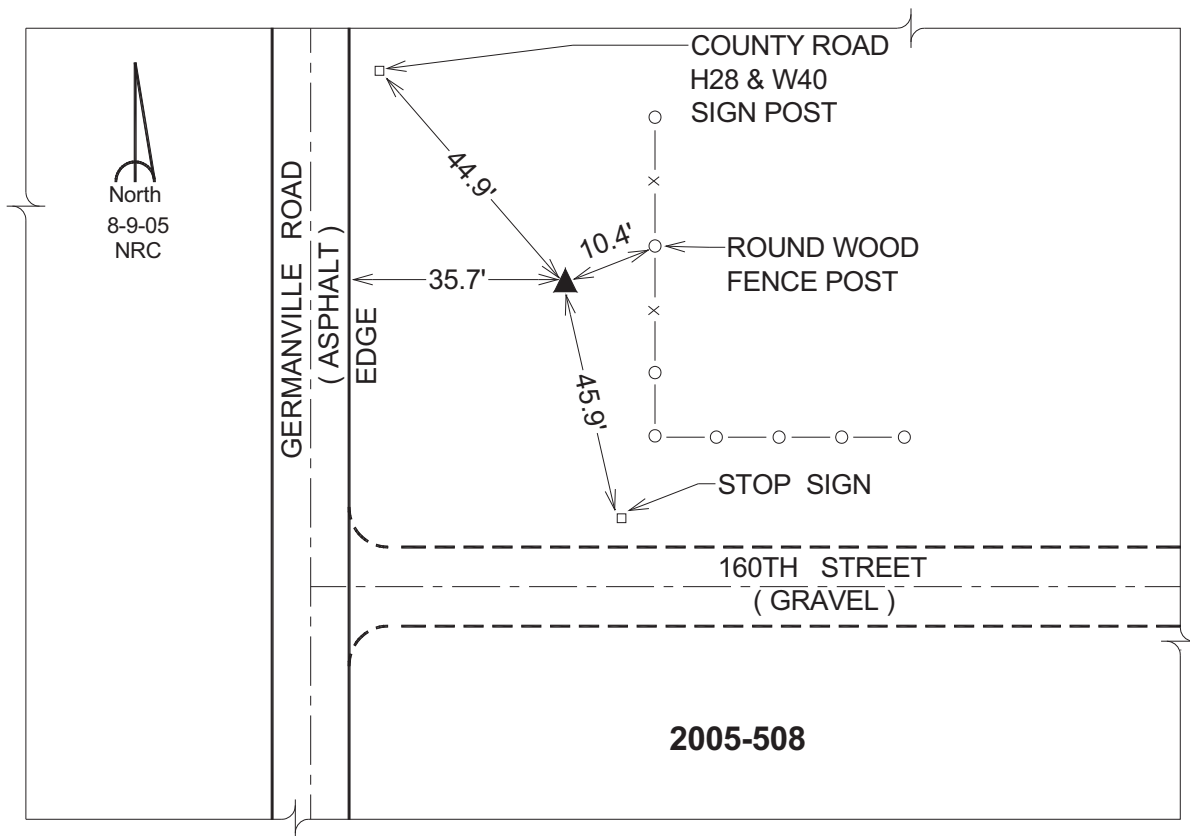
Northing: **396392.46sft** Easting: **2116067.02sft**

Orthometric Height: **654.29sft** Ellipsoid Height: **546.60sft** **Geoid03**

Latitude: **41°04'30.19187"N** Longitude: **91°46'28.85518"W**

Mapping Angle: **1°08'11"** Combination Scale Factor: **0.99992469**

Monument Type: Berntsen Top Security Rod Monument with a 2-1/2" dia. domed survey cap and permanent magnet encased in a 5"dia. PVC pipe with a NGS style aluminum access cover.



This document was prepared by DCI for use by Jefferson Co., Iowa.