

Jefferson County, Iowa
Iowa South Zone (1402)
Horiz. Datum: NAD83(1996)
Vert. Datum: NAVD 1988
US Survey Feet
2005

Point Name: **509**

Designation: 2005-509 Jefferson Co GPS Control Point

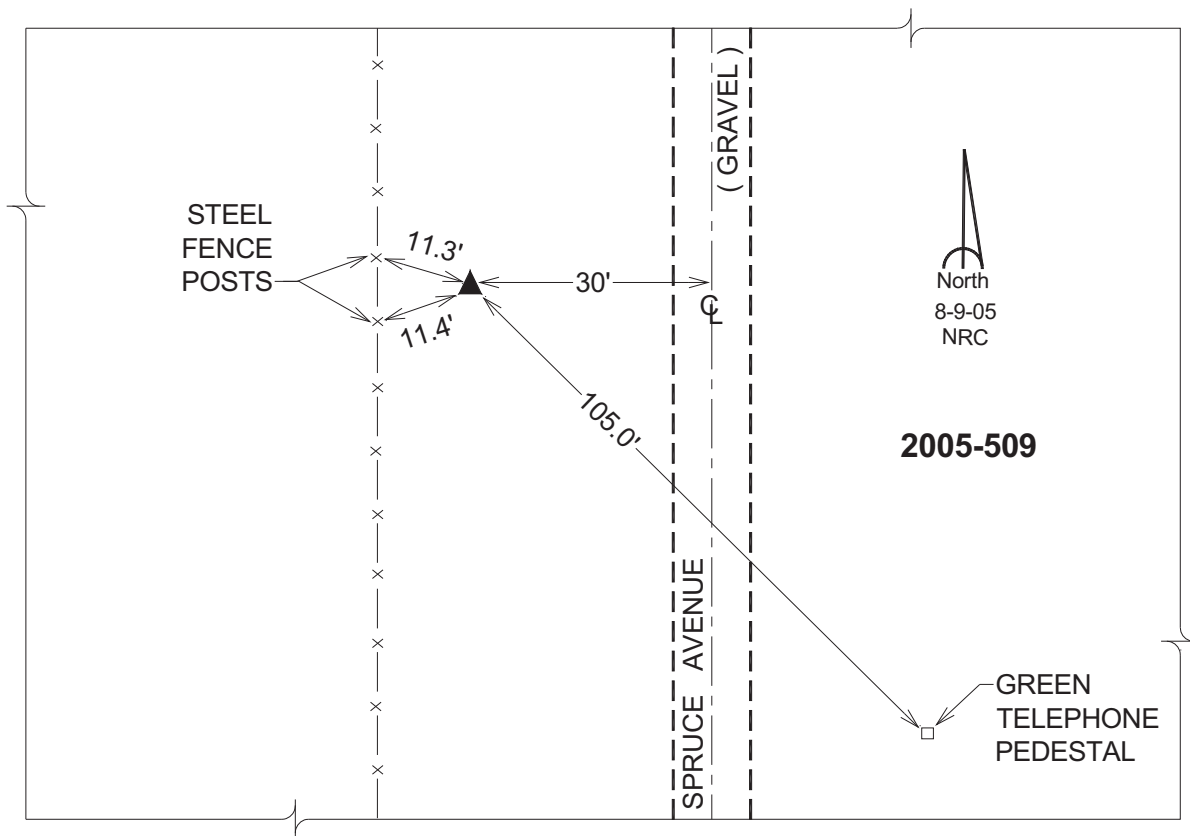
Northing: **394145.89sft** Easting: **2100076.03sft**

Orthometric Height: **730.35sft** Ellipsoid Height: **622.81sft** **Geoid03**

Latitude: **41°04'11.07876"N** Longitude: **91°49'58.17919"W**

Mapping Angle: **1°05'53"** Combination Scale Factor: **0.99992126**

Monument Type: Berntsen Top Security Rod Monument with a 2-1/2" dia. domed survey cap and permanent magnet encased in a 5"dia. PVC pipe with a NGS style aluminum access cover.



This document was prepared by DCI for use by Jefferson Co., Iowa.