

**Jefferson County, Iowa**  
Iowa South Zone (1402)  
Horiz. Datum: NAD83(1996)  
Vert. Datum: NAVD 1988  
US Survey Feet  
**2005**

Point Name: **510**

**Designation:** 2005-510 Jefferson Co GPS Control Point

Northing: **394997.52sft** Easting: **2082816.61sft**

Orthometric Height: **776.96sft** Ellipsoid Height: **669.59sft** **Geoid03**

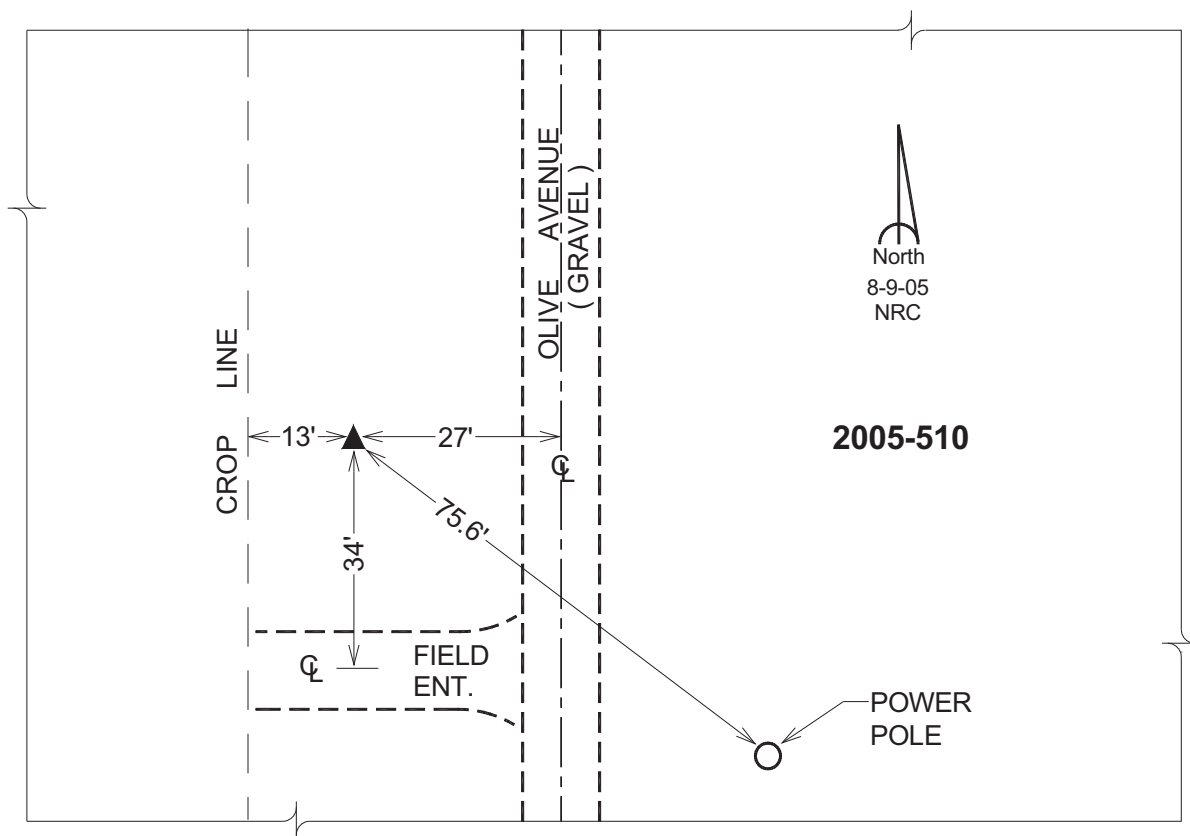
Latitude: **41°04'22.69944"N**

Longitude: **91°53'43.27999"W**

Mapping Angle: **1°03'25"**

Combination Scale Factor: **0.99991890**

**Monument Type:** Berntsen Top Security Rod Monument with a 2-1/2" dia. domed survey cap and permanent magnet encased in a 5"dia. PVC pipe with a NGS style aluminum access cover.



*This document was prepared by DCI for use by Jefferson Co., Iowa.*