

Jefferson County, Iowa
Iowa South Zone (1402)
Horiz. Datum: NAD83(1996)
Vert. Datum: NAVD 1988
US Survey Feet
2005

Point Name: **511**

Designation: 2005-511 Jefferson Co GPS Control Point

Northing: **395578.41sft** Easting: **2068202.09sft**

Orthometric Height: **772.69sft** Ellipsoid Height: **665.44sft** **Geoid03**

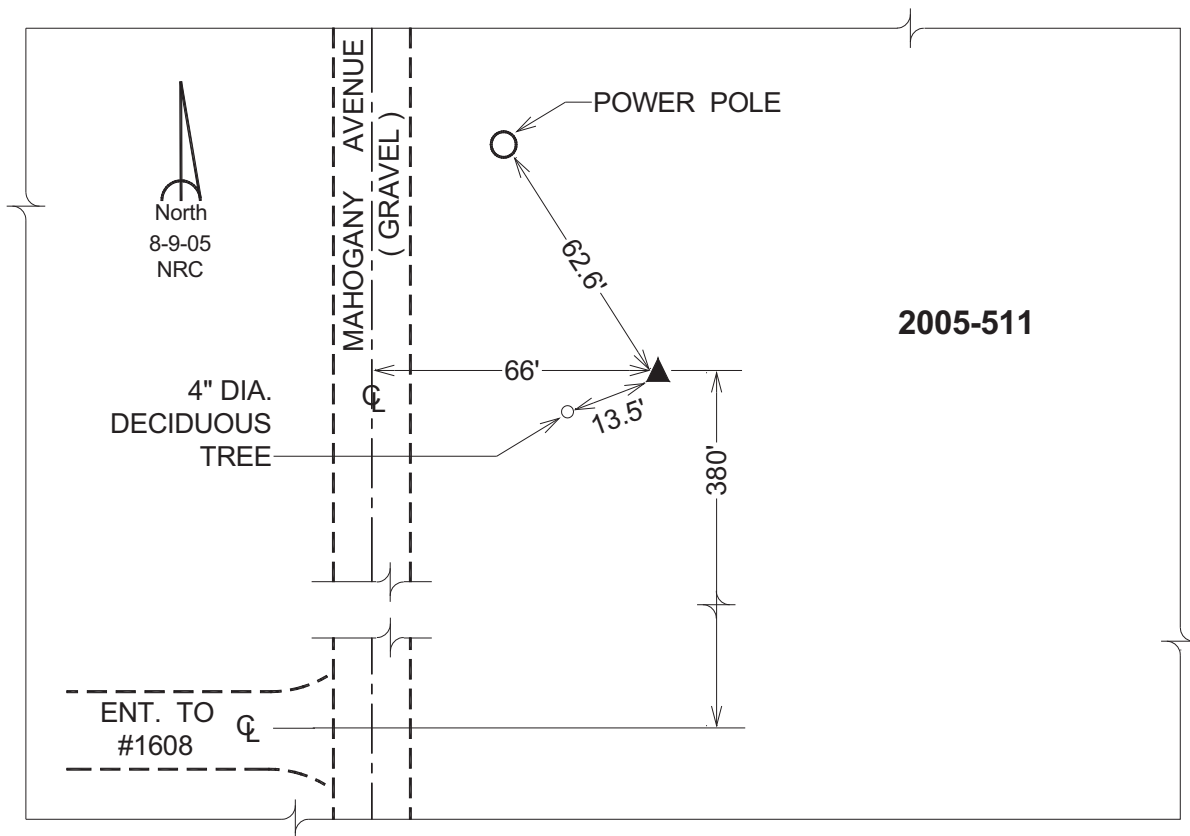
Latitude: **41°04'31.05816"N**

Longitude: **91°56'53.93538"W**

Mapping Angle: **1°01'20"**

Combination Scale Factor: **0.99991901**

Monument Type: Berntsen Top Security Rod Monument with a 2-1/2" dia. domed survey cap and permanent magnet encased in a 5"dia. PVC pipe with a NGS style aluminum access cover.



This document was prepared by DCI for use by Jefferson Co., Iowa.