

Jefferson County, Iowa
Iowa South Zone (1402)
Horiz. Datum: NAD83(1996)
Vert. Datum: NAVD 1988
US Survey Feet
2005

Point Name: **512**

Designation: 2005-512 Jefferson Co GPS Control Point

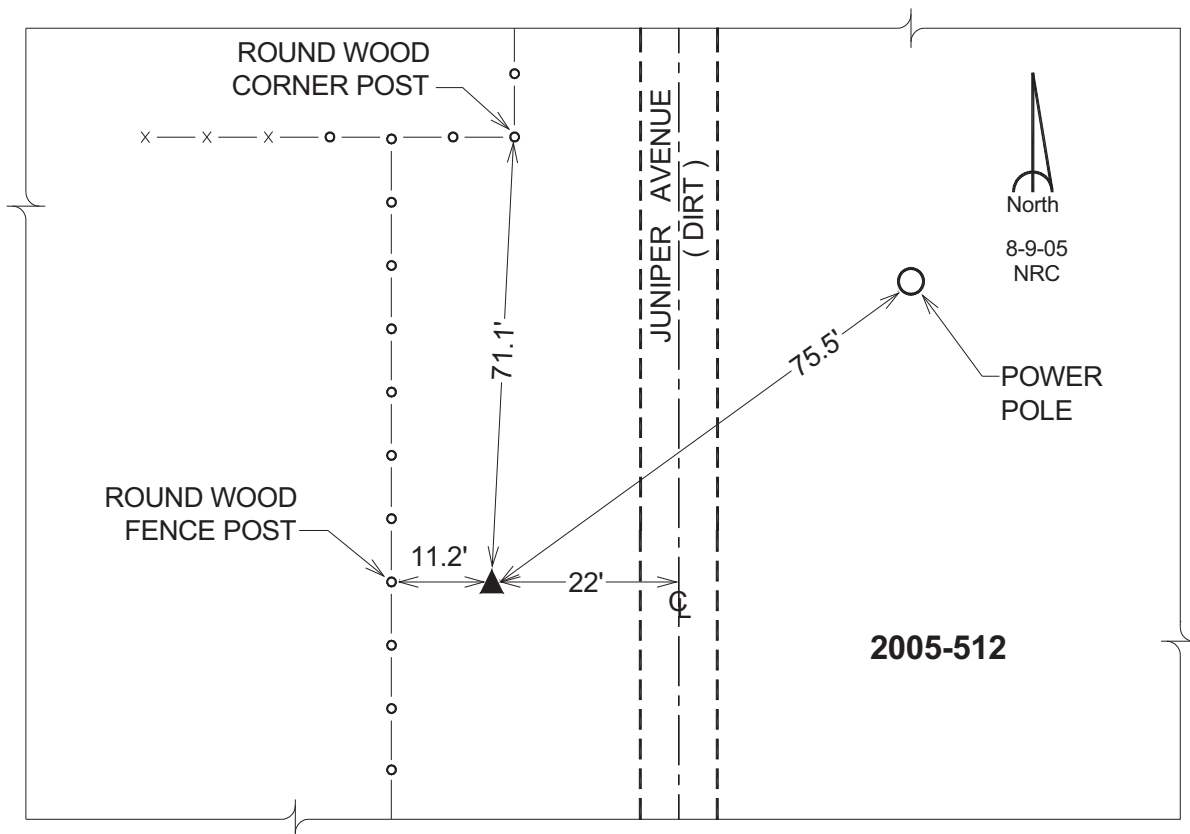
Northing: **395469.36sft** Easting: **2052185.09sft**

Orthometric Height: **792.07sft** Ellipsoid Height: **684.87sft** **Geoid03**

Latitude: **41°04'32.75101"N** Longitude: **92°00'23.06949"W**

Mapping Angle: **0°59'02"** Combination Scale Factor: **0.99991806**

Monument Type: Berntsen Top Security Rod Monument with a 2-1/2" dia. domed survey cap and permanent magnet encased in a 5"dia. PVC pipe with a NGS style aluminum access cover.



This document was prepared by DCI for use by Jefferson Co., Iowa.