

Jefferson County, Iowa
Iowa South Zone (1402)
Horiz. Datum: NAD83(1996)
Vert. Datum: NAVD 1988
US Survey Feet
2005

Point Name: **513**

Designation: 2005-513 Jefferson Co GPS Control Point

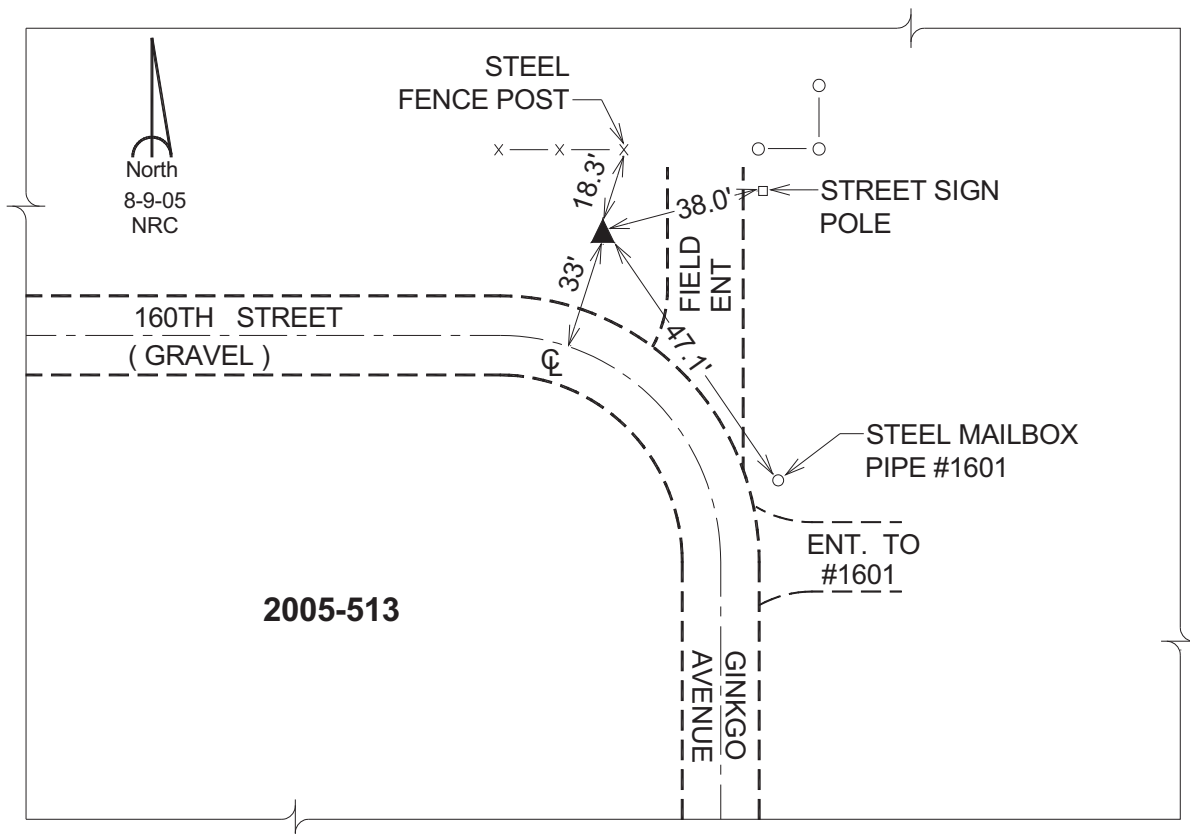
Northing: **395482.63sft** Easting: **2036408.83sft**

Orthometric Height: **767.27sft** Ellipsoid Height: **660.09sft** **Geoid03**

Latitude: **41°04'35.50747"N** Longitude: **92°03'49.03702"W**

Mapping Angle: **0°56'46"** Combination Scale Factor: **0.99991922**

Monument Type: Berntsen Top Security Rod Monument with a 2-1/2" dia. domed survey cap and permanent magnet encased in a 5"dia. PVC pipe with a NGS style aluminum access cover.



This document was prepared by DCI for use by Jefferson Co., Iowa.