

**Jefferson County, Iowa**  
Iowa South Zone (1402)  
Horiz. Datum: NAD83(1996)  
Vert. Datum: NAVD 1988  
US Survey Feet  
**2005**

Point Name: **514**

**Designation:** 2005-514 Jefferson Co GPS Control Point

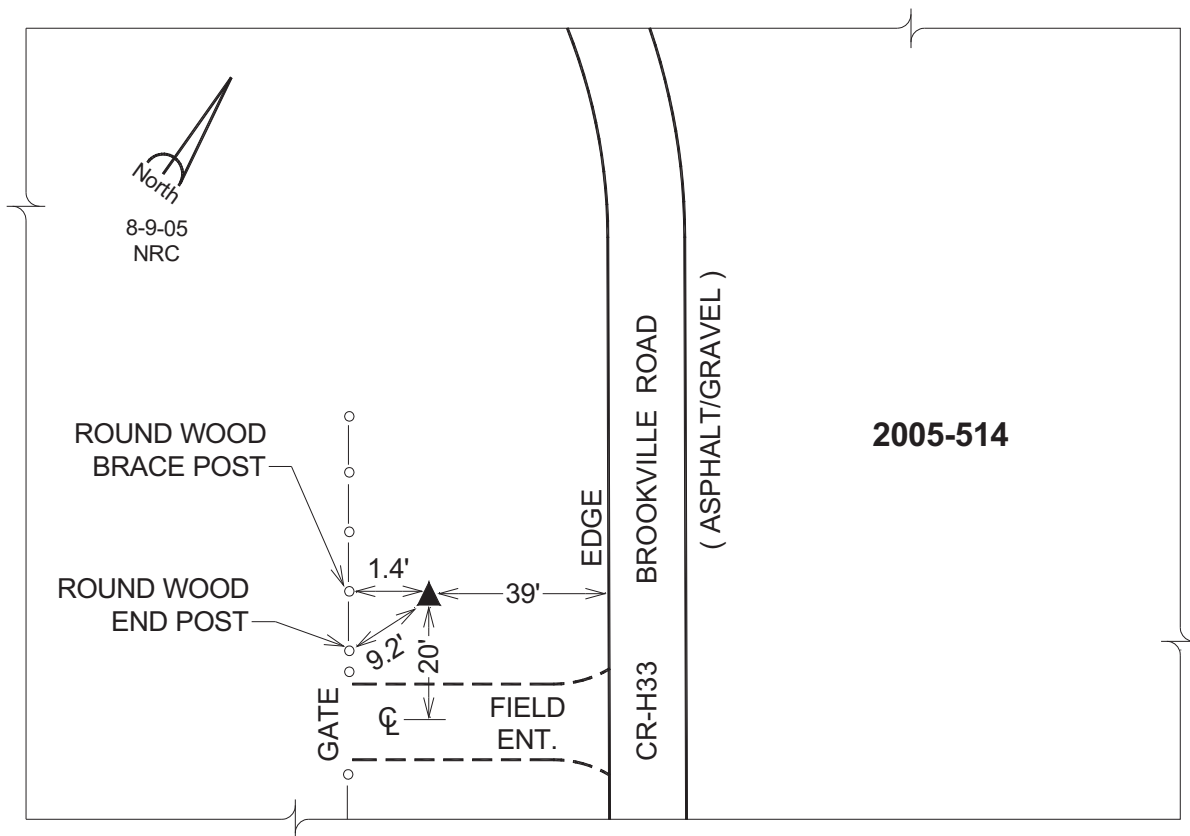
Northing: **392908.48sft** Easting: **2022311.92sft**

Orthometric Height: **773.45sft** Ellipsoid Height: **666.26sft** **Geoid03**

Latitude: **41°04'12.33474"N** Longitude: **92°06'53.62153"W**

Mapping Angle: **0°54'45"** Combination Scale Factor: **0.99991917**

**Monument Type:** Berntsen Top Security Rod Monument with a 2-1/2" dia. domed survey cap and permanent magnet encased in a 5"dia. PVC pipe with a NGS style aluminum access cover.



*This document was prepared by DCI for use by Jefferson Co., Iowa.*