

Jefferson County, Iowa
Iowa South Zone (1402)
Horiz. Datum: NAD83(1996)
Vert. Datum: NAVD 1988
US Survey Feet
2005

Point Name: **515**

Designation: 2005-515 Jefferson Co GPS Control Point

Northing: **378976.53sft** Easting: **2020969.00sft**

Orthometric Height: **728.73sft** Ellipsoid Height: **621.40sft** **Geoid03**

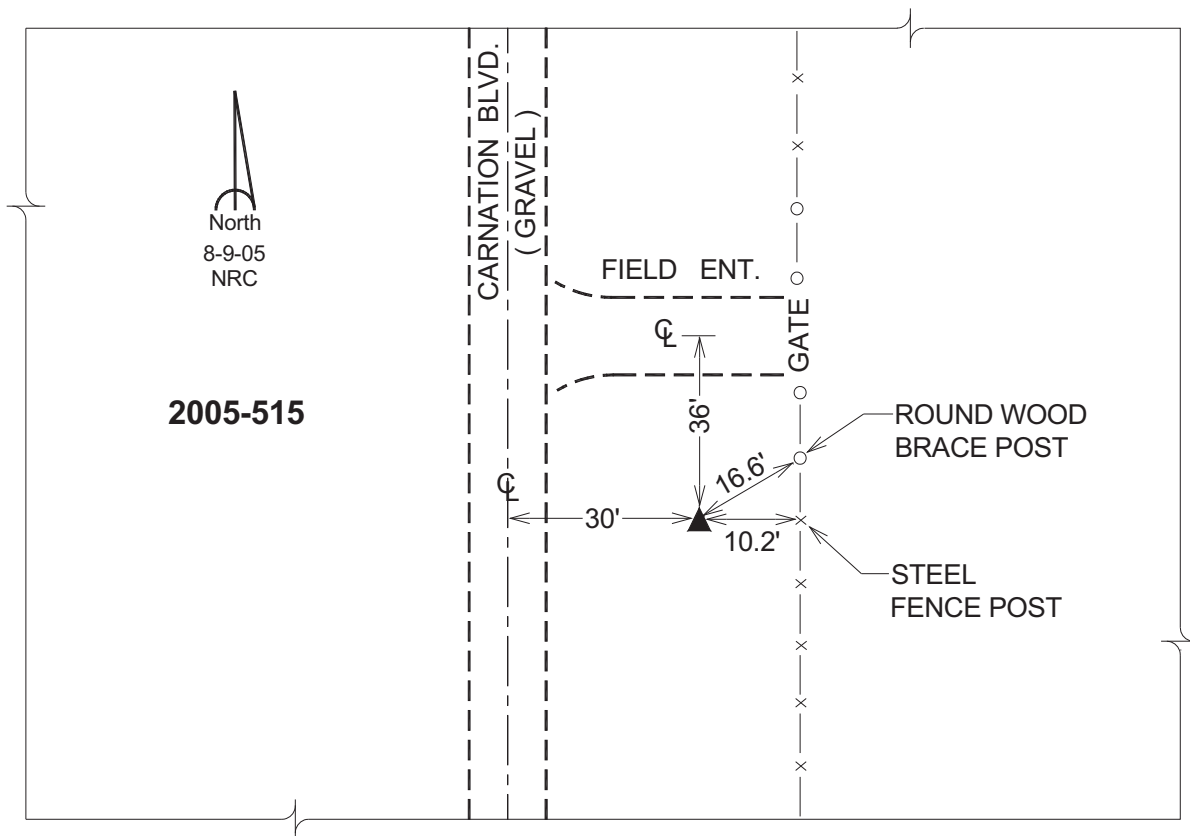
Latitude: **41°01'54.90111"N**

Longitude: **92°07'14.03756"W**

Mapping Angle: **0°54'31"**

Combination Scale Factor: **0.99992305**

Monument Type: Berntsen Top Security Rod Monument with a 2-1/2" dia. domed survey cap and permanent magnet encased in a 5"dia. PVC pipe with a NGS style aluminum access cover.



This document was prepared by DCI for use by Jefferson Co., Iowa.