

Jefferson County, Iowa
Iowa South Zone (1402)
Horiz. Datum: NAD83(1996)
Vert. Datum: NAVD 1988
US Survey Feet
2005

Point Name: **516**

Designation: 2005-516 Jefferson Co GPS Control Point

Northing: **380617.77sft** Easting: **2037443.23sft**

Orthometric Height: **768.79sft** Ellipsoid Height: **661.48sft** **Geoid03**

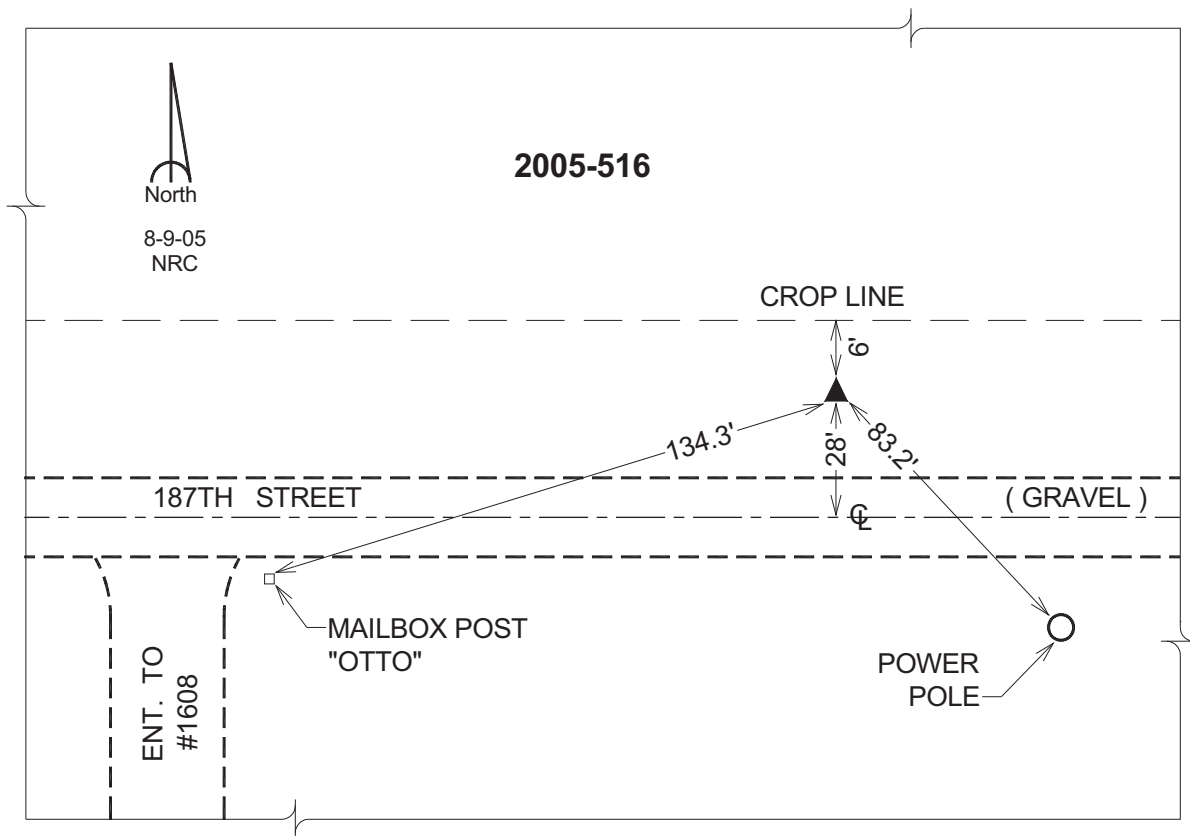
Latitude: **41°02'08.47881"N**

Longitude: **92°03'38.74361"W**

Mapping Angle: **0°56'53"**

Combination Scale Factor: **0.99992094**

Monument Type: Berntsen Top Security Rod Monument with a 2-1/2" dia. domed survey cap and permanent magnet encased in a 5"dia. PVC pipe with a NGS style aluminum access cover.



This document was prepared by DCI for use by Jefferson Co., Iowa.