

Jefferson County, Iowa
Iowa South Zone (1402)
Horiz. Datum: NAD83(1996)
Vert. Datum: NAVD 1988
US Survey Feet
2005

Point Name: **517**

Designation: 2005-517 Jefferson Co GPS Control Point

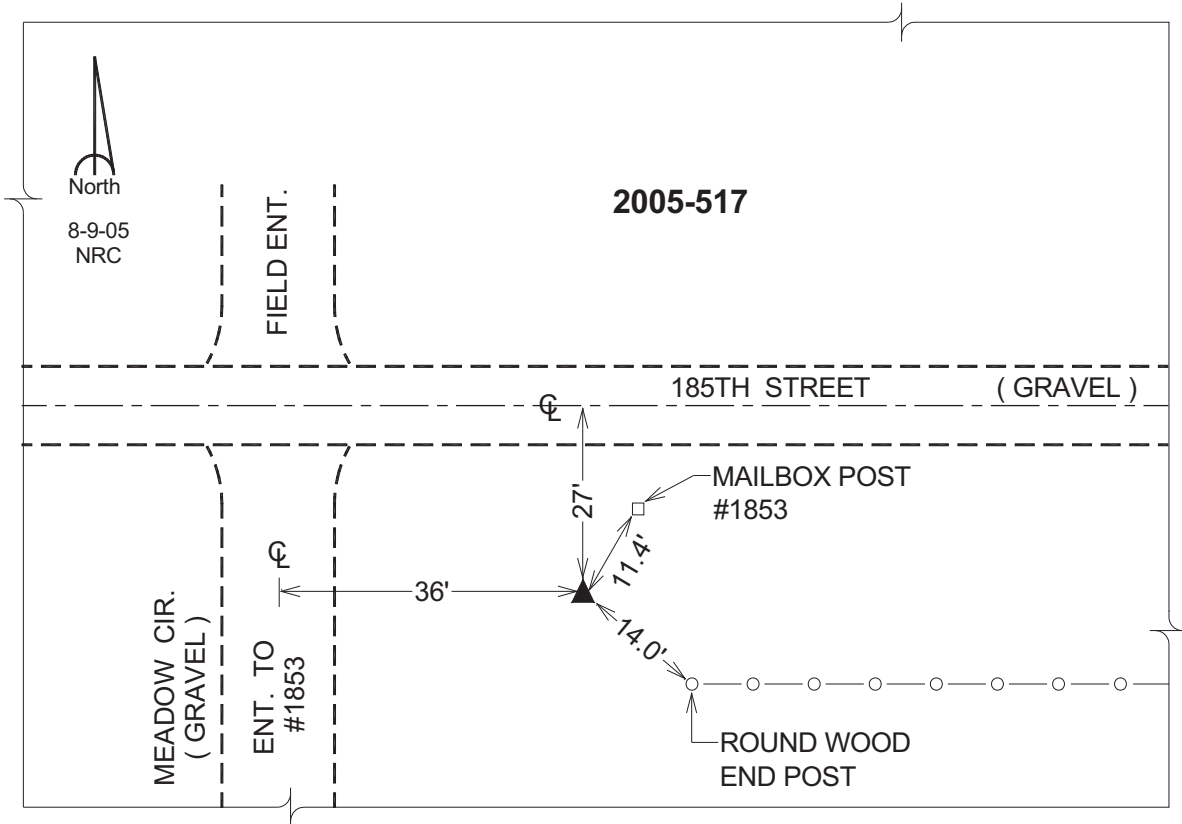
Northing: **382063.95sft** Easting: **2051176.76sft**

Orthometric Height: **771.85sft** Ellipsoid Height: **664.56sft** **Geoid03**

Latitude: **41°02'20.48234"N** Longitude: **92°00'39.23029"W**

Mapping Angle: **0°58'51"** Combination Scale Factor: **0.99992063**

Monument Type: Berntsen Top Security Rod Monument with a 2-1/2" dia. domed survey cap and permanent magnet encased in a 5"dia. PVC pipe with a NGS style aluminum access cover.



This document was prepared by DCI for use by Jefferson Co., Iowa.