

Jefferson County, Iowa
Iowa South Zone (1402)
Horiz. Datum: NAD83(1996)
Vert. Datum: NAVD 1988
US Survey Feet
2005

Point Name: **518**

Designation: 2005-518 Jefferson Co GPS Control Point

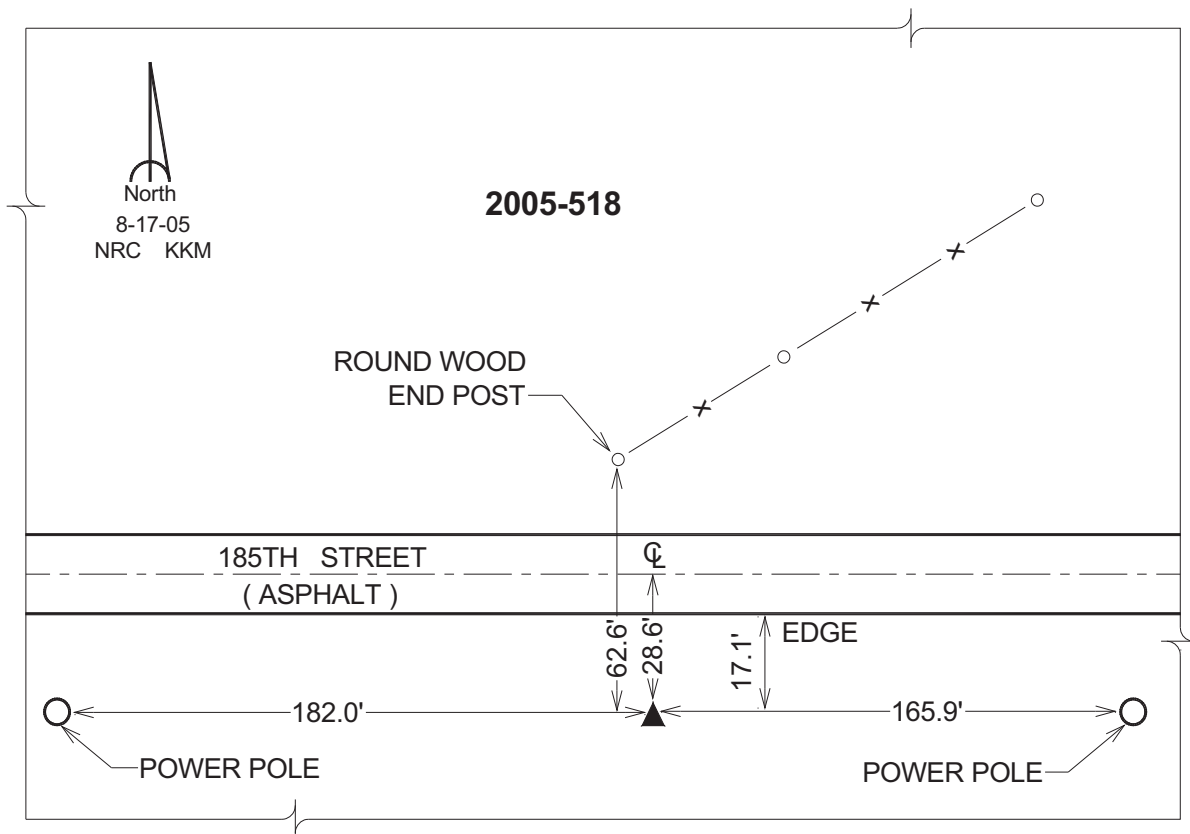
Northing: **382500.25sft** Easting: **2069058.86sft**

Orthometric Height: **791.82sft** Ellipsoid Height: **684.51sft** **Geoid03**

Latitude: **41°02'21.70217"N** Longitude: **91°56'45.80049"W**

Mapping Angle: **1°01'25"** Combination Scale Factor: **0.99991966**

Monument Type: Berntsen Top Security Rod Monument with a 2-1/2" dia. domed survey cap and permanent magnet encased in a 5"dia. PVC pipe with a NGS style aluminum access cover.



This document was prepared by DCI for use by Jefferson Co., Iowa.