

Jefferson County, Iowa
Iowa South Zone (1402)
Horiz. Datum: NAD83(1996)
Vert. Datum: NAVD 1988
US Survey Feet
2005

Point Name: **519**

Designation: 2005-519 Jefferson Co GPS Control Point

Northing: **379949.24sft** Easting: **2085725.00sft**

Orthometric Height: **778.13sft** Ellipsoid Height: **670.66sft** **Geoid03**

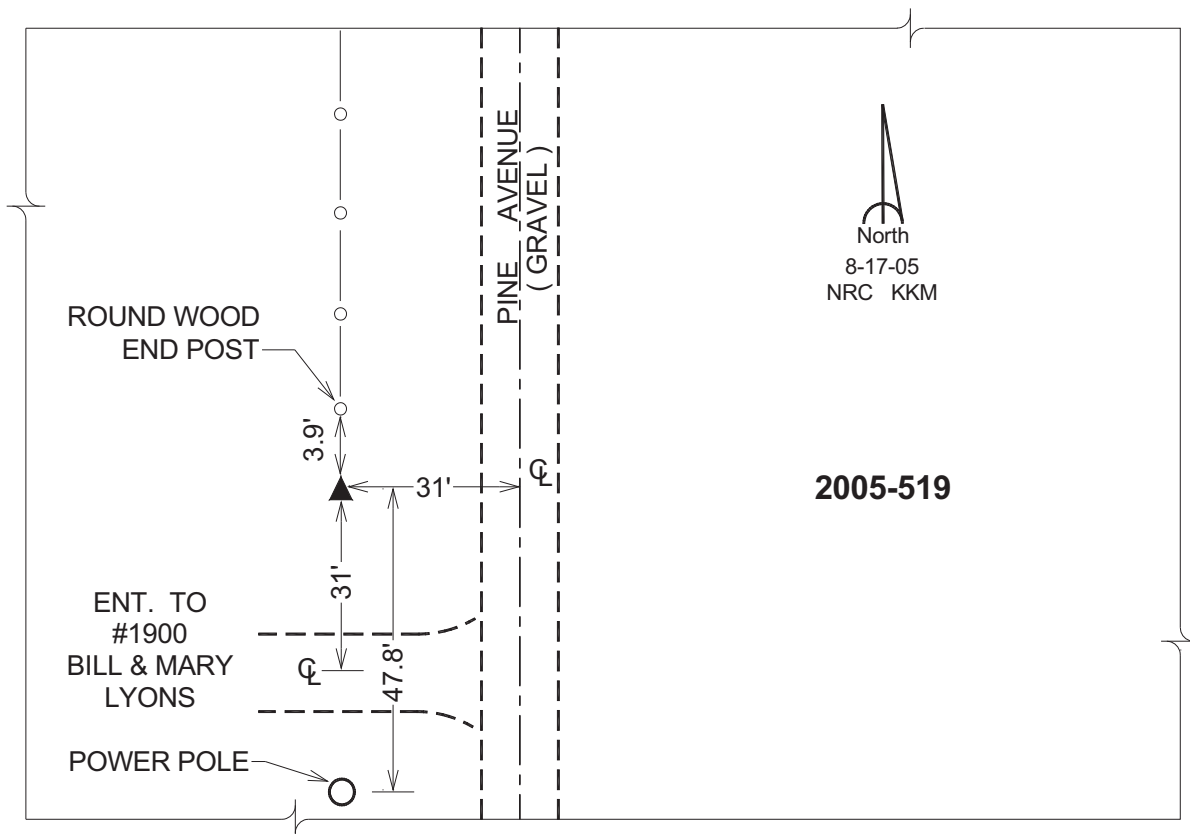
Latitude: **41°01'53.50100"N**

Longitude: **91°53'08.95794"W**

Mapping Angle: **1°03'48"**

Combination Scale Factor: **0.99992072**

Monument Type: Berntsen Top Security Rod Monument with a 2-1/2" dia. domed survey cap and permanent magnet encased in a 5"dia. PVC pipe with a NGS style aluminum access cover.



This document was prepared by DCI for use by Jefferson Co., Iowa.