

Jefferson County, Iowa
 Iowa South Zone (1402)
 Horiz. Datum: NAD83(1996)
 Vert. Datum: NAVD 1988
 US Survey Feet
2005

Point Name: **520**

Designation: 2005-520 Jefferson Co GPS Control Point

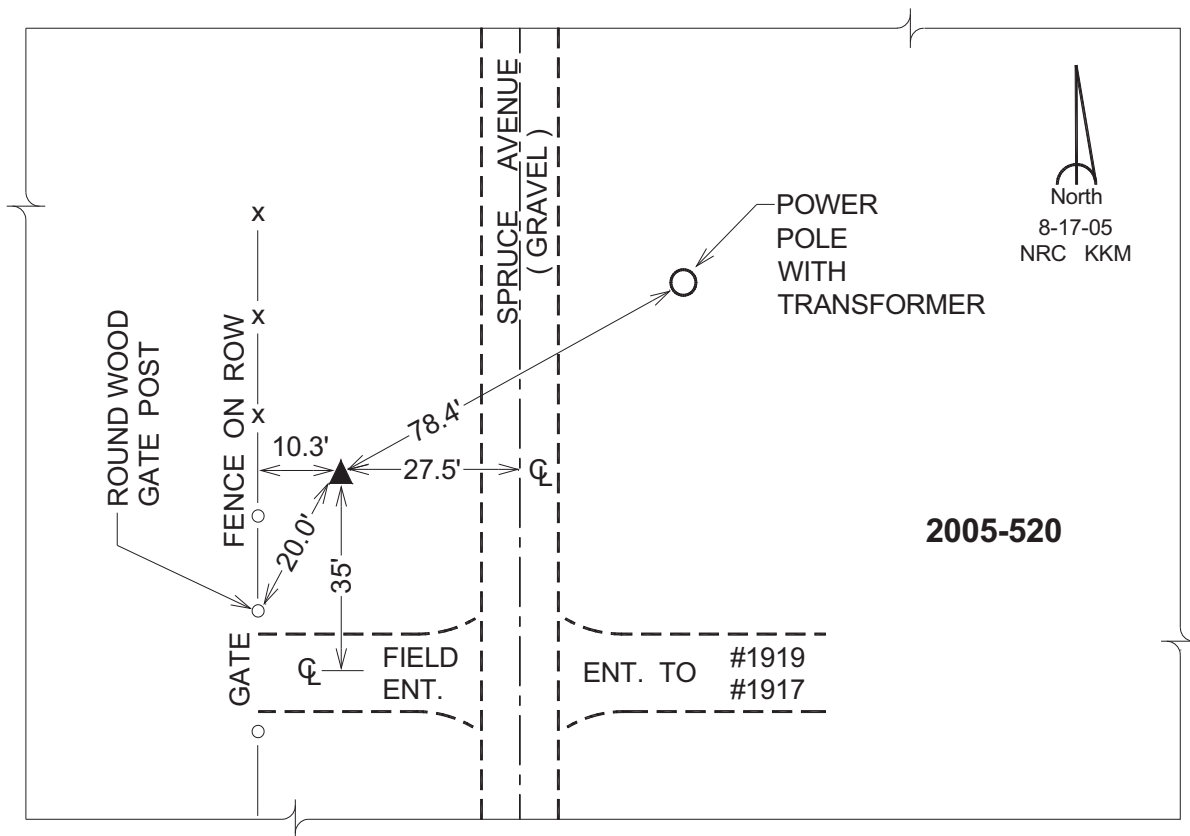
Northing: **379229.36sft** Easting: **2100280.26sft**

Orthometric Height: **749.12sft** Ellipsoid Height: **641.50sft** **Geoid03**

Latitude: **41°01'43.67672"N** Longitude: **91°49'59.24502"W**

Mapping Angle: **1°05'53"** Combination Scale Factor: **0.99992225**

Monument Type: Berntsen Top Security Rod Monument with a 2-1/2" dia. domed survey cap and permanent magnet encased in a 5"dia. PVC pipe with a NGS style aluminum access cover.



This document was prepared by DCI for use by Jefferson Co., Iowa.