

**Jefferson County, Iowa**  
 Iowa South Zone (1402)  
 Horiz. Datum: NAD83(1996)  
 Vert. Datum: NAVD 1988  
 US Survey Feet  
**2005**

Point Name: **521**

**Designation:** 2005-521 Jefferson Co GPS Control Point

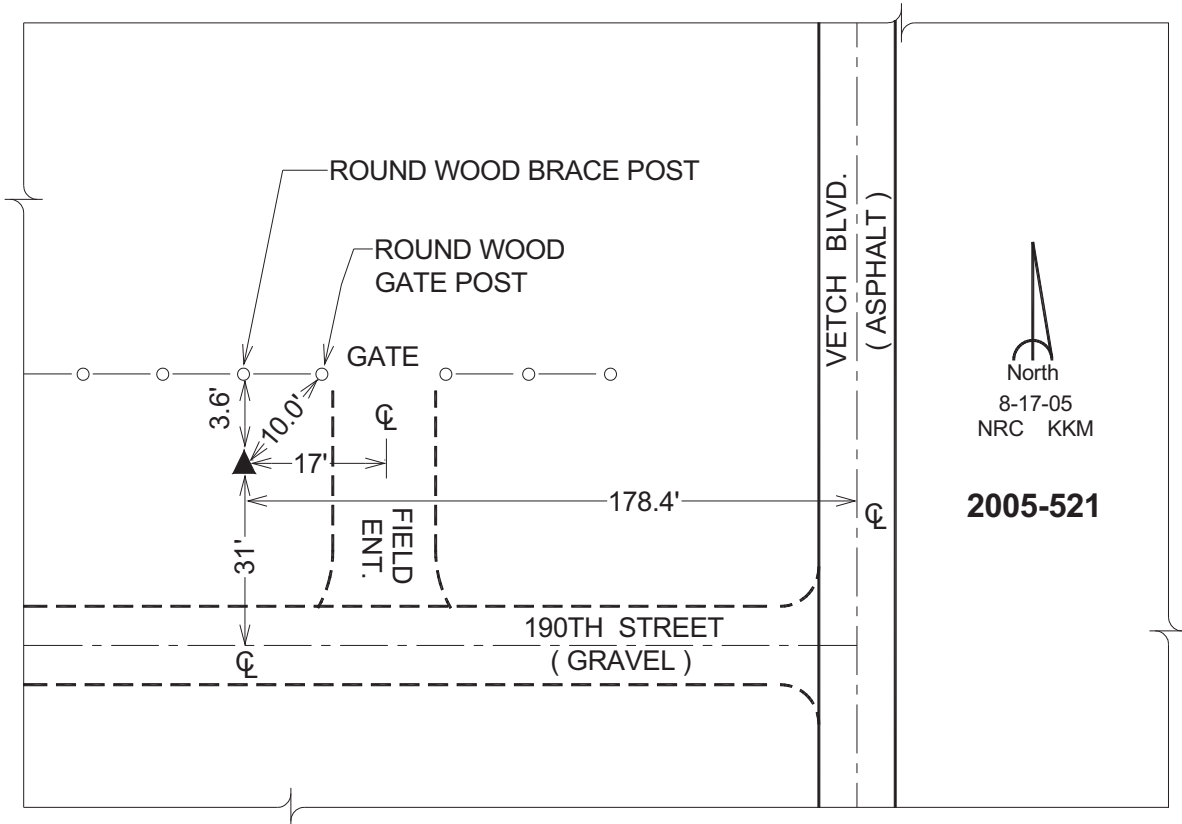
Northing: **380615.15sft** Easting: **2116038.80sft**

Orthometric Height: **722.73sft** Ellipsoid Height: **614.96sft** **Geoid03**

Latitude: **41°01'54.33218"N** Longitude: **91°46'33.30669"W**

Mapping Angle: **1°08'08"** Combination Scale Factor: **0.99992336**

**Monument Type:** Berntsen Top Security Rod Monument with a 2-1/2" dia. domed survey cap and permanent magnet encased in a 5"dia. PVC pipe with a NGS style aluminum access cover.



*This document was prepared by DCI for use by Jefferson Co., Iowa.*