

Jefferson County, Iowa
Iowa South Zone (1402)
Horiz. Datum: NAD83(1996)
Vert. Datum: NAVD 1988
US Survey Feet
2005

Point Name: **522**

Designation: 2005-522 Jefferson Co GPS Control Point

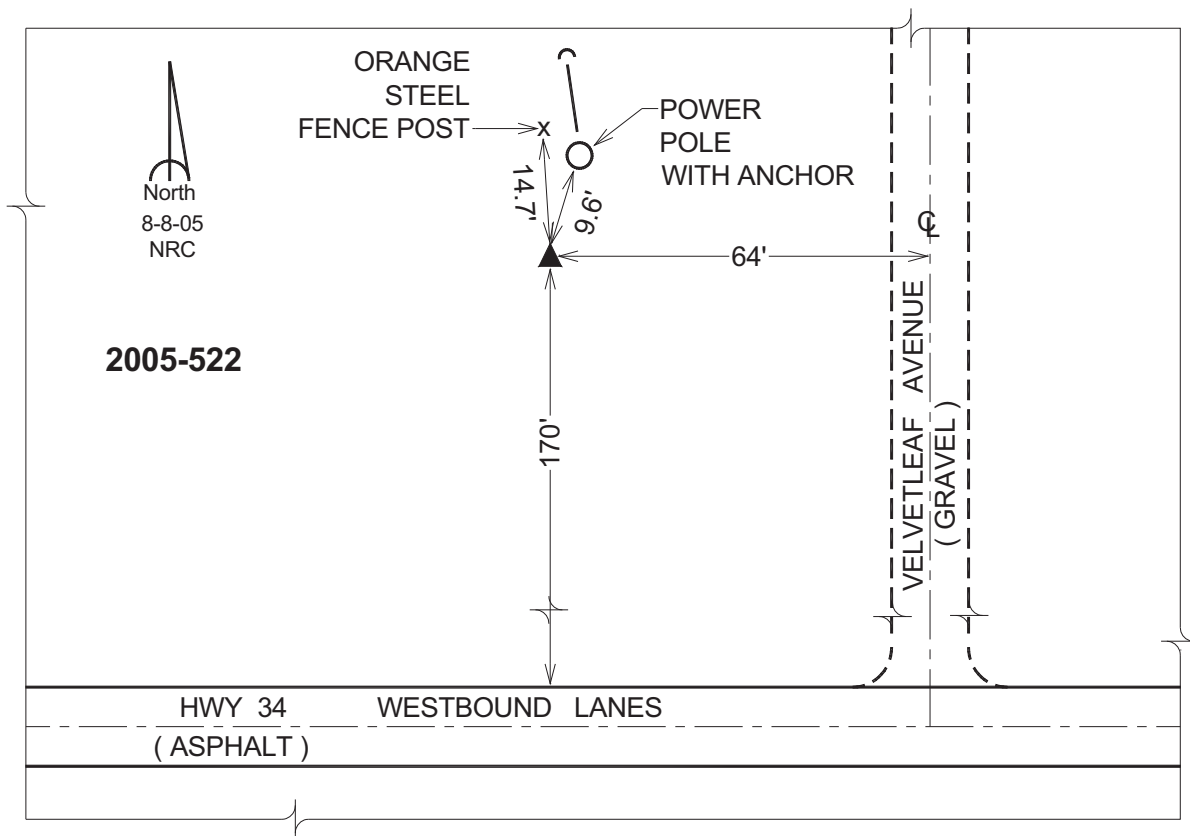
Northing: **365013.86sft** Easting: **2116335.14sft**

Orthometric Height: **727.79sft** Ellipsoid Height: **619.93sft** **Geoid03**

Latitude: **40°59'20.14714"N** Longitude: **91°46'33.47523"W**

Mapping Angle: **1°08'08"** Combination Scale Factor: **0.99992560**

Monument Type: Berntsen Top Security Rod Monument with a 2-1/2" dia. domed survey cap and permanent magnet encased in a 5"dia. PVC pipe with a NGS style aluminum access cover.



This document was prepared by DCI for use by Jefferson Co., Iowa.