

Jefferson County, Iowa
Iowa South Zone (1402)
Horiz. Datum: NAD83(1996)
Vert. Datum: NAVD 1988
US Survey Feet
2005

Point Name: **523**

Designation: 2005-523 Jefferson Co GPS Control Point

Northing: **366150.24sft** Easting: **2100537.60sft**

Orthometric Height: **772.37sft** Ellipsoid Height: **664.65sft** **Geoid03**

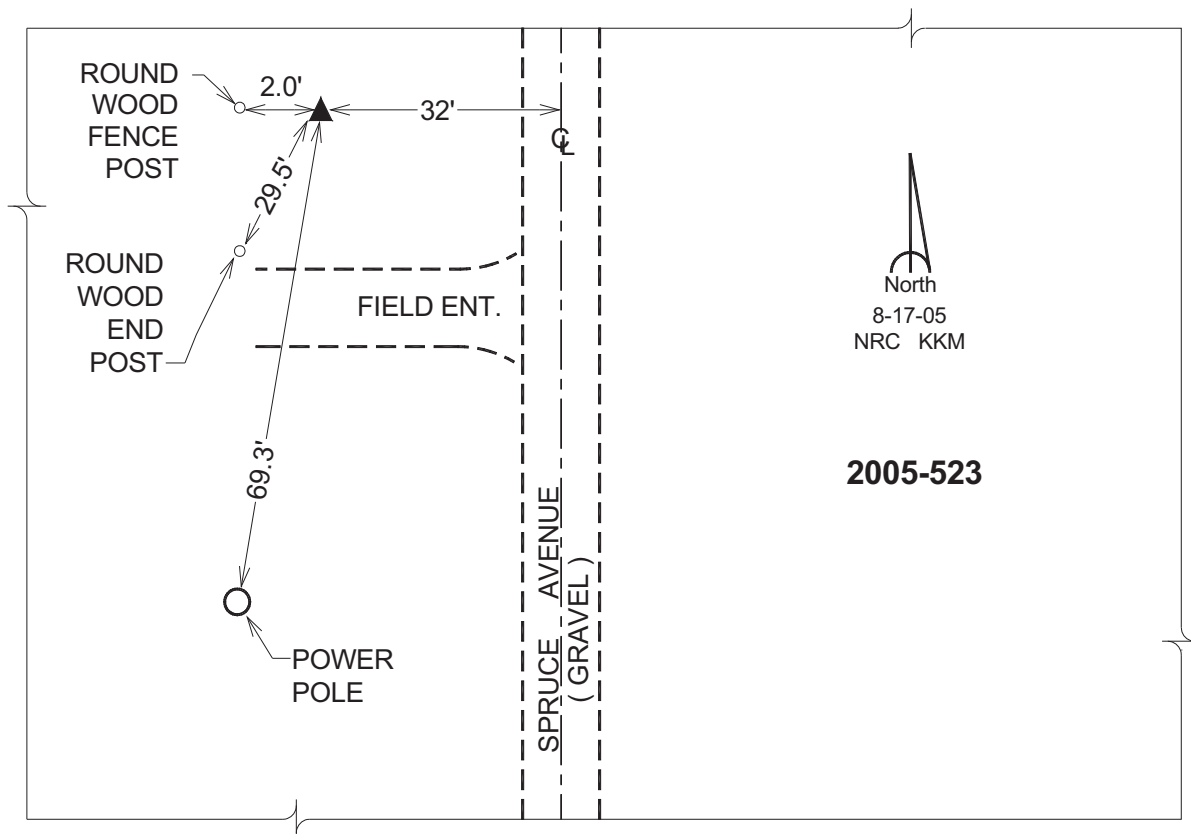
Latitude: **40°59'34.41605"N**

Longitude: **91°49'59.15814"W**

Mapping Angle: **1°05'53"**

Combination Scale Factor: **0.99992321**

Monument Type: Berntsen Top Security Rod Monument with a 2-1/2" dia. domed survey cap and permanent magnet encased in a 5"dia. PVC pipe with a NGS style aluminum access cover.



This document was prepared by DCI for use by Jefferson Co., Iowa.