

Jefferson County, Iowa
Iowa South Zone (1402)
Horiz. Datum: NAD83(1996)
Vert. Datum: NAVD 1988
US Survey Feet
2005

Point Name: **525**

Designation: 2005-525 Jefferson Co GPS Control Point

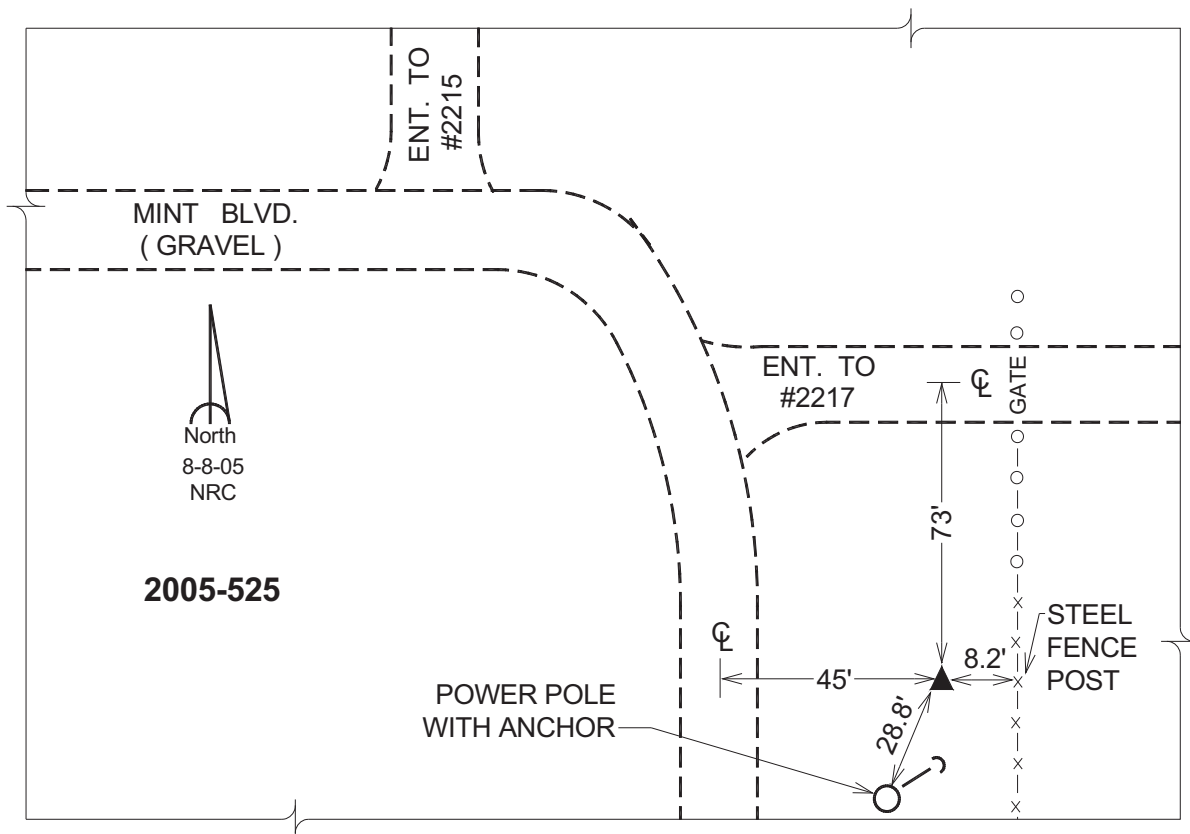
Northing: **363122.52sft** Easting: **2071482.77sft**

Orthometric Height: **767.99sft** Ellipsoid Height: **660.46sft** **Geoid03**

Latitude: **40°59'09.83146"N** Longitude: **91°56'18.71232"W**

Mapping Angle: **1°01'43"** Combination Scale Factor: **0.99992385**

Monument Type: Berntsen Top Security Rod Monument with a 2-1/2" dia. domed survey cap and permanent magnet encased in a 5"dia. PVC pipe with a NGS style aluminum access cover.



This document was prepared by DCI for use by Jefferson Co., Iowa.