

Jefferson County, Iowa
Iowa South Zone (1402)
Horiz. Datum: NAD83(1996)
Vert. Datum: NAVD 1988
US Survey Feet
2005

Point Name: **526**

Designation: 2005-526 Jefferson Co GPS Control Point

Northing: **361841.39sft** Easting: **2056595.42sft**

Orthometric Height: **753.52sft** Ellipsoid Height: **646.01sft** **Geoid03**

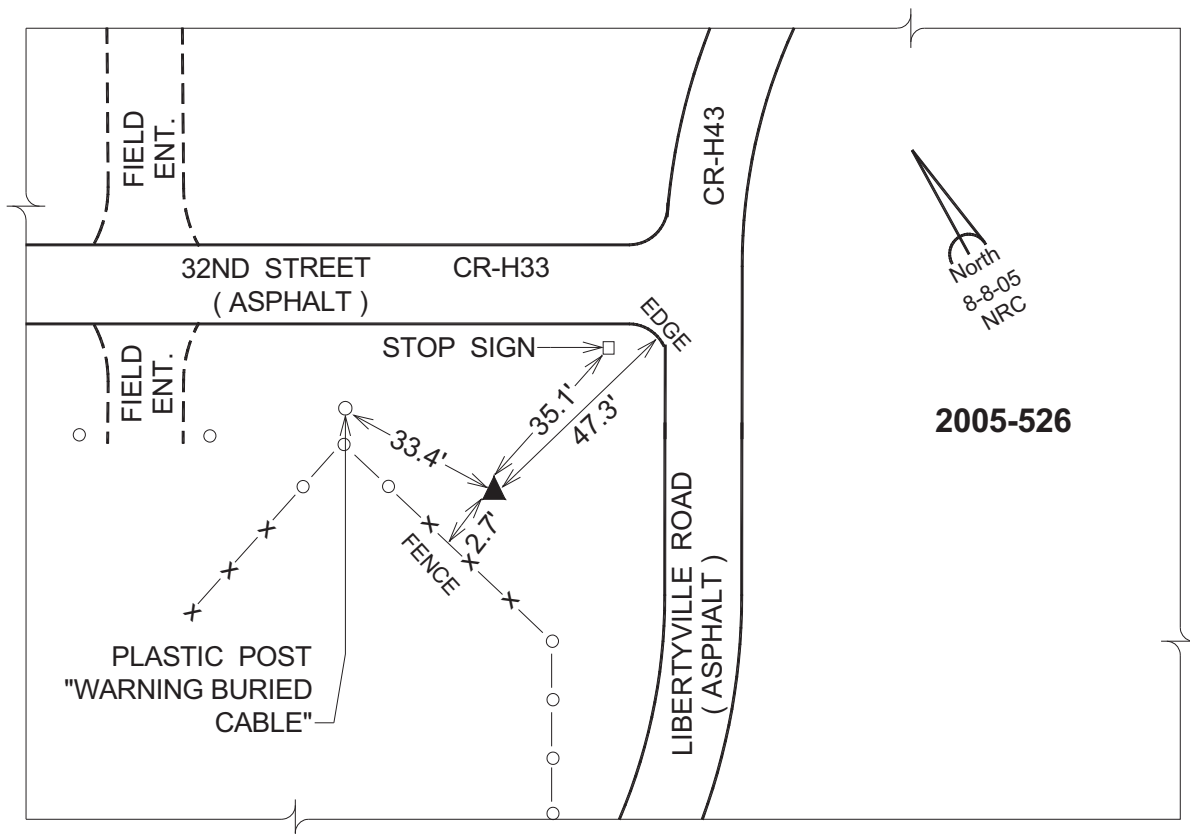
Latitude: **40°58'59.76939"N**

Longitude: **91°59'33.09967"W**

Mapping Angle: **0°59'35"**

Combination Scale Factor: **0.99992472**

Monument Type: Berntsen Top Security Rod Monument with a 2-1/2" dia. domed survey cap and permanent magnet encased in a 5"dia. PVC pipe with a NGS style aluminum access cover.



This document was prepared by DCI for use by Jefferson Co., Iowa.