

Jefferson County, Iowa
Iowa South Zone (1402)
Horiz. Datum: NAD83(1996)
Vert. Datum: NAVD 1988
US Survey Feet
2005

Point Name: **527**

Designation: 2005-527 Jefferson Co GPS Control Point

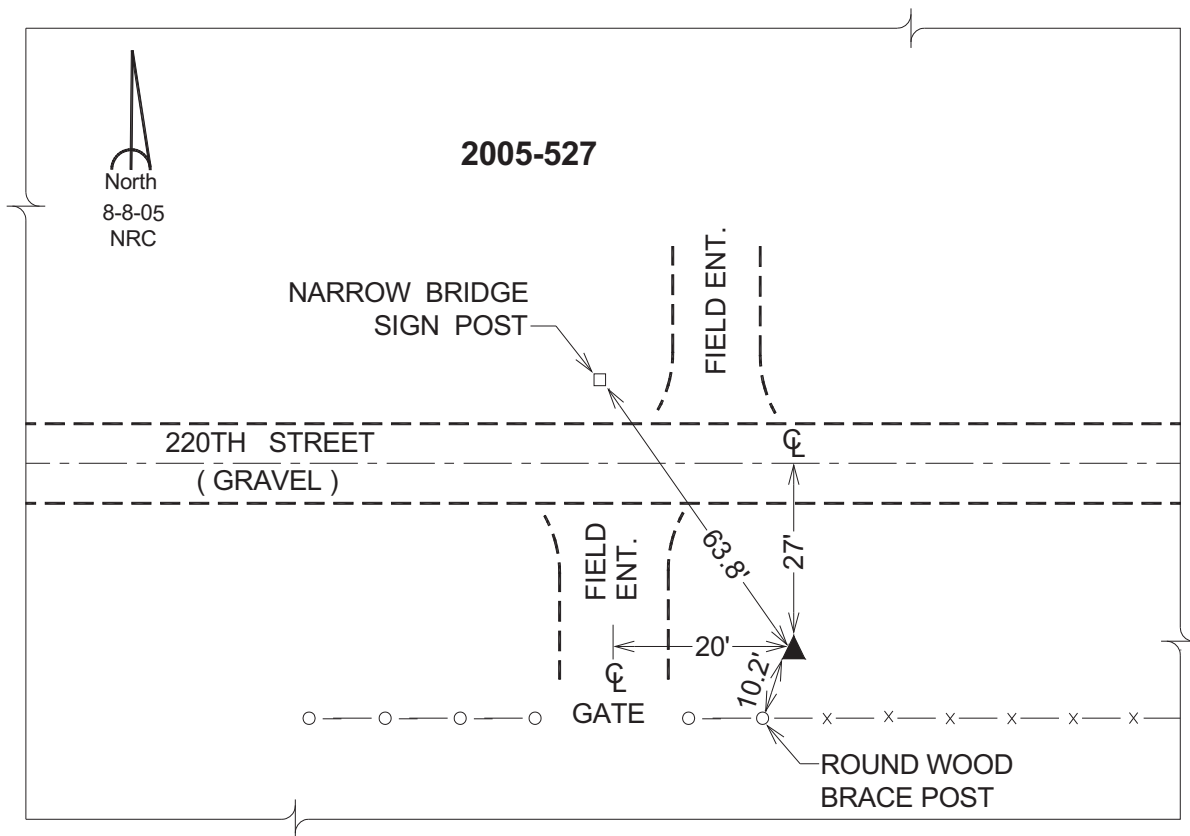
Northing: **363298.45sft** Easting: **2038156.23sft**

Orthometric Height: **725.33sft** Ellipsoid Height: **617.83sft** **Geoid03**

Latitude: **40°59'17.25229"N** Longitude: **92°03'33.18398"W**

Mapping Angle: **0°56'57"** Combination Scale Factor: **0.99992575**

Monument Type: Berntsen Top Security Rod Monument with a 2-1/2" dia. domed survey cap and permanent magnet encased in a 5"dia. PVC pipe with a NGS style aluminum access cover.



This document was prepared by DCI for use by Jefferson Co., Iowa.