

**Jefferson County, Iowa**  
Iowa South Zone (1402)  
Horiz. Datum: NAD83(1996)  
Vert. Datum: NAVD 1988  
US Survey Feet  
**2005**

Point Name: **528**

**Designation:** 2005-528 Jefferson Co GPS Control Point

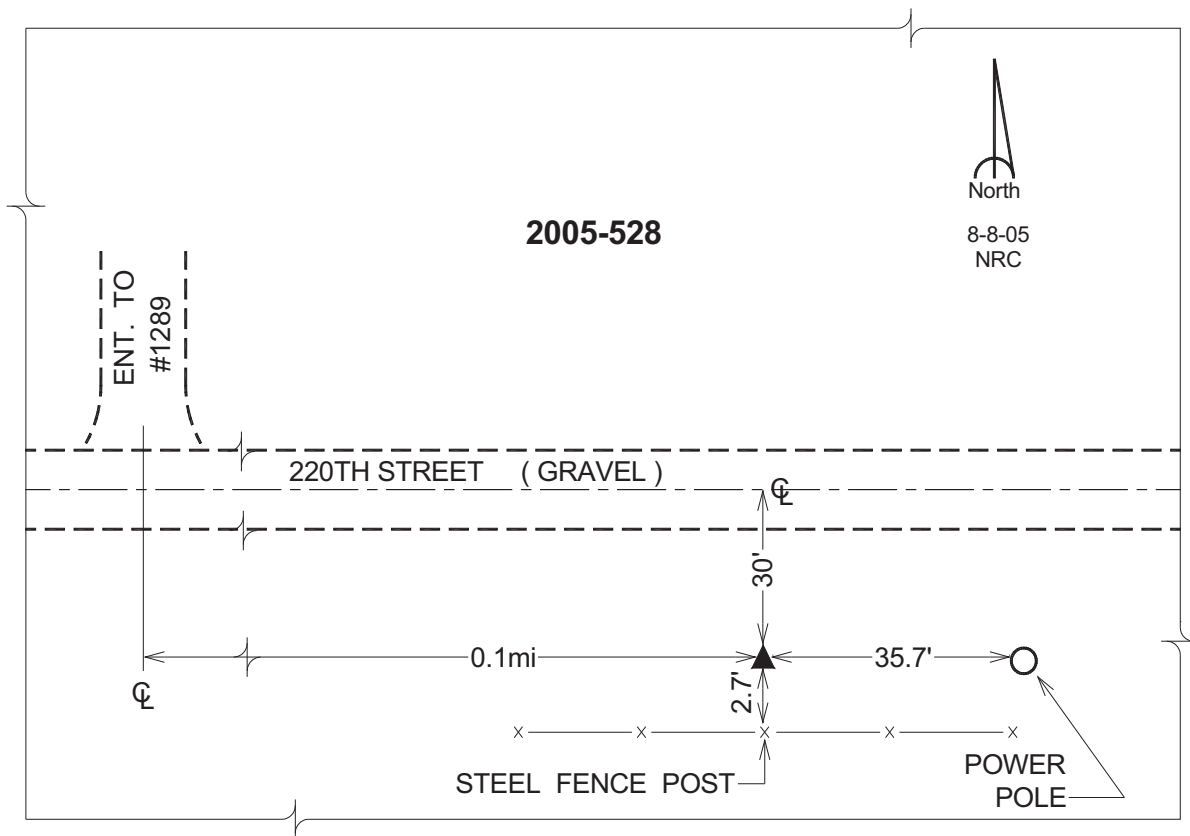
Northing: **363030.03sft**    Easting: **2021452.61sft**

Orthometric Height: **750.81sft**    Ellipsoid Height: **643.31sft**    **Geoid03**

Latitude: **40°59'17.27675"N**                      Longitude: **92°07'11.02954"W**

Mapping Angle: **0°54'33"**                      Combination Scale Factor: **0.99992453**

**Monument Type:** Berntsen Top Security Rod Monument with a 2-1/2" dia. domed survey cap and permanent magnet encased in a 5"dia. PVC pipe with a NGS style aluminum access cover.



*This document was prepared by DCI for use by Jefferson Co., Iowa.*