

**Jefferson County, Iowa**  
Iowa South Zone (1402)  
Horiz. Datum: NAD83(1996)  
Vert. Datum: NAVD 1988  
US Survey Feet  
**2005**

Point Name: **529**

**Designation:** 2005-529 Jefferson Co GPS Control Point

Northing: **346487.06sft** Easting: **2022655.49sft**

Orthometric Height: **742.93sft** Ellipsoid Height: **635.24sft** **Geoid03**

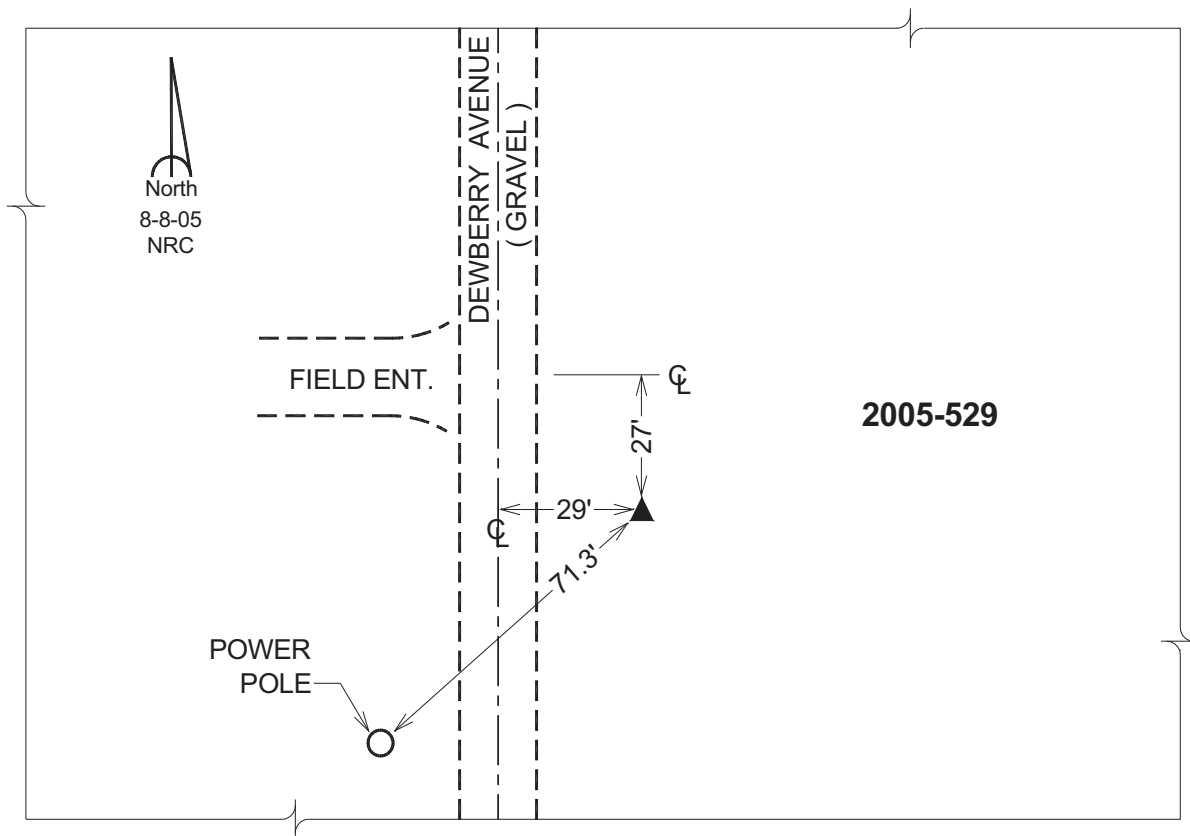
Latitude: **40°56'33.64562"N**

Longitude: **92°06'58.77729"W**

Mapping Angle: **0°54'41"**

Combination Scale Factor: **0.99992816**

**Monument Type:** Berntsen Top Security Rod Monument with a 2-1/2" dia. domed survey cap and permanent magnet encased in a 5"dia. PVC pipe with a NGS style aluminum access cover.



*This document was prepared by DCI for use by Jefferson Co., Iowa.*