

Jefferson County, Iowa
Iowa South Zone (1402)
Horiz. Datum: NAD83(1996)
Vert. Datum: NAVD 1988
US Survey Feet
2005

Point Name: **531**

Designation: 2005-531 Jefferson Co GPS Control Point

Northing: **347449.19sft** Easting: **2052493.67sft**

Orthometric Height: **758.86sft** Ellipsoid Height: **651.16sft** **Geoid03**

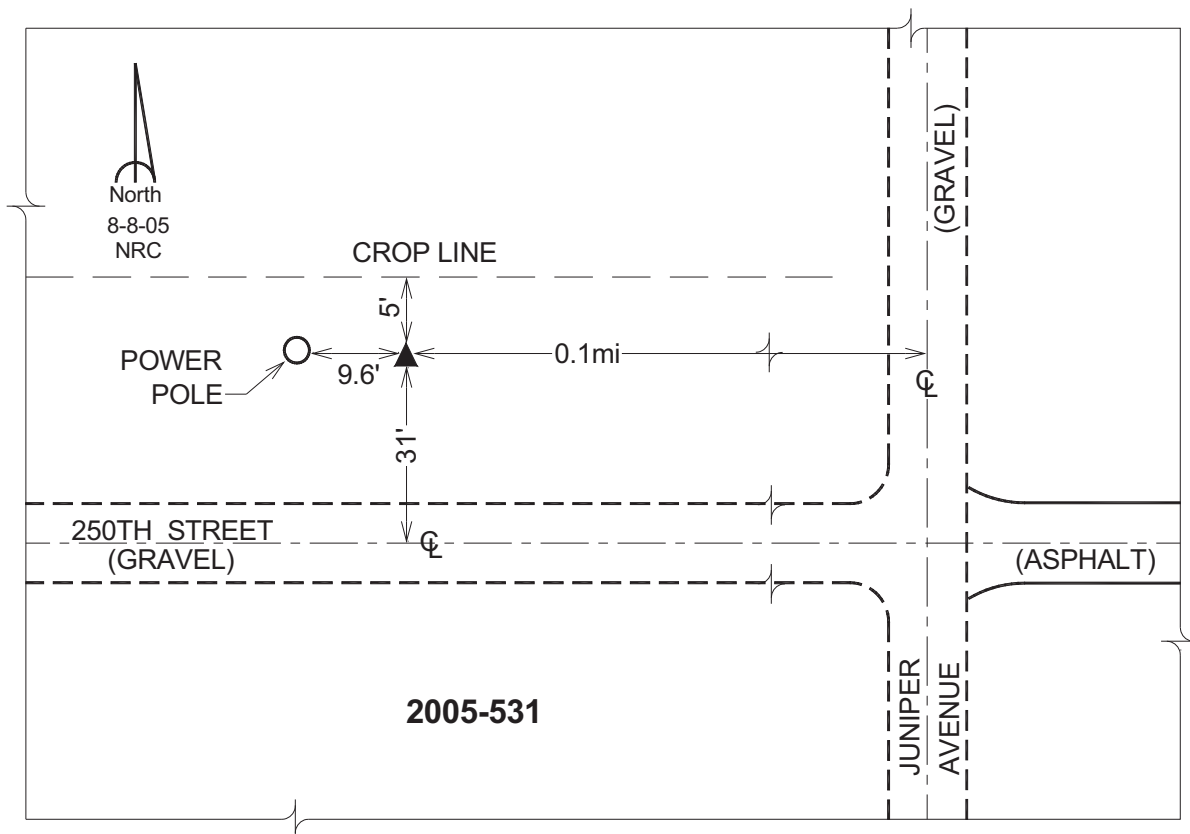
Latitude: **40°56'38.27823"N**

Longitude: **92°00'29.79344"W**

Mapping Angle: **0°58'57"**

Combination Scale Factor: **0.99992730**

Monument Type: Berntsen Top Security Rod Monument with a 2-1/2" dia. domed survey cap and permanent magnet encased in a 5"dia. PVC pipe with a NGS style aluminum access cover.



This document was prepared by DCI for use by Jefferson Co., Iowa.